

BLACK HILLS DEER

There were 7,831 single-tag licenses issued for the 2009 Black Hills Deer season (7,218 resident, 613 nonresident).

A random sample of 3,104 hunters was taken (40% of license holders) and there were 2,683 responses for an 86% return rate. Approximately 59% of responding hunters used the Internet to respond to their survey.

The season ran the usual month of November, a total of 30 days. The special antlerless season again ran the entire month of November, an increase from the 10-day season in 2004. Those responding reported hunting an average of 4.75 days, which projected to 36,390 recreation days for the season. Of those responding, 9.9% stated they did not hunt at all during the season.

The mean satisfaction score for all combined units was 4.53. The satisfaction scale ranged from 1 = "very dissatisfied" to 7 = "very satisfied".

The harvest projection for the Black Hills Deer season was 3,781 deer (2,287 adult whitetail bucks, 163 fawn whitetail bucks, 1,011 adult whitetail does, 111 fawn whitetail does, 123 adult mule deer bucks, 11 fawn mule deer bucks, 71 adult mule deer does and 3 fawn mule deer does). The overall season harvest success rate was 48%, down from 51% in 2008.

Including the estimated Black Hills harvest from the Archery, Youth and Muzzleloader seasons, approximately 5,466 deer were harvested in the Black Hills proper.

Harvest summaries for the 2000-2009 Black Hills Deer seasons.

YEAR	Licenses Sold		Harvest					Success	Avg Days Hunted	Avg Satis
	Resident	Nonres	Bucks		Does		Total			
			WT	Mule	WT	Mule				
2000	7,350	571	2,603	500	782	84	3,969	50%	3.89	5.23
2001	6,211	496	2,419	859	313	71	3,662	55%	4.14	5.20
2002	5,980	474	2,365	618	346	40	3,369	52%	4.59	5.25
2003	5,965	473	2,427	694	402	53	3,576	56%	4.01	5.42
2004	6,810	536	2,802	783	946	58	4,589	62%	4.14	5.46
2005	7,217	597	2,219	696	1,324	8	4,247	54%	4.12	5.50
2006	8,250	689	2,746	722	1,770	167	5,405	60%	4.22	5.37
2007	8,240	709	3,172	133	1,988	104	5,397	60%	4.45	5.27
2008	8,451	722	2,620	138	1,824	56	4,638	51%	4.08	5.11
2009	7,218	613	2,450	134	1,122	74	3,781	48%	4.75	4.53

2009 Black Hills Deer Harvest Projections

Last Revised: 10 March 2010

Unit/Type	Licenses		Harvest Projections													Mean Satisfctn Score	Avg Days Hunted	
	Avail.	Sold	Whitetail		Mule Deer		Total Deer Harvested	Hunters	Resp.	Success	Bucks		Does					
			Avail.	Sold	Bucks	Does					Bucks	Does	Adult	Fawn	Adult			Fawn
					Adult	Fawn	Adult	Fawn	Adult	Fawn	Adult	Fawn	Adult	Fawn				
Black Hills	7,200	7,218	576	613	7,661	86%	48%	2,287	163	1,011	111	123	11	71	3	3,781	4.53	4.75

Satisfaction scale of 1=very dissatisfied to 7=very satisfied.

Harvest projections were developed for units where response rate was less than 85% and may not be within +/- 15% of the sample statistic.

2009 Black Hills Deer Harvest Projections

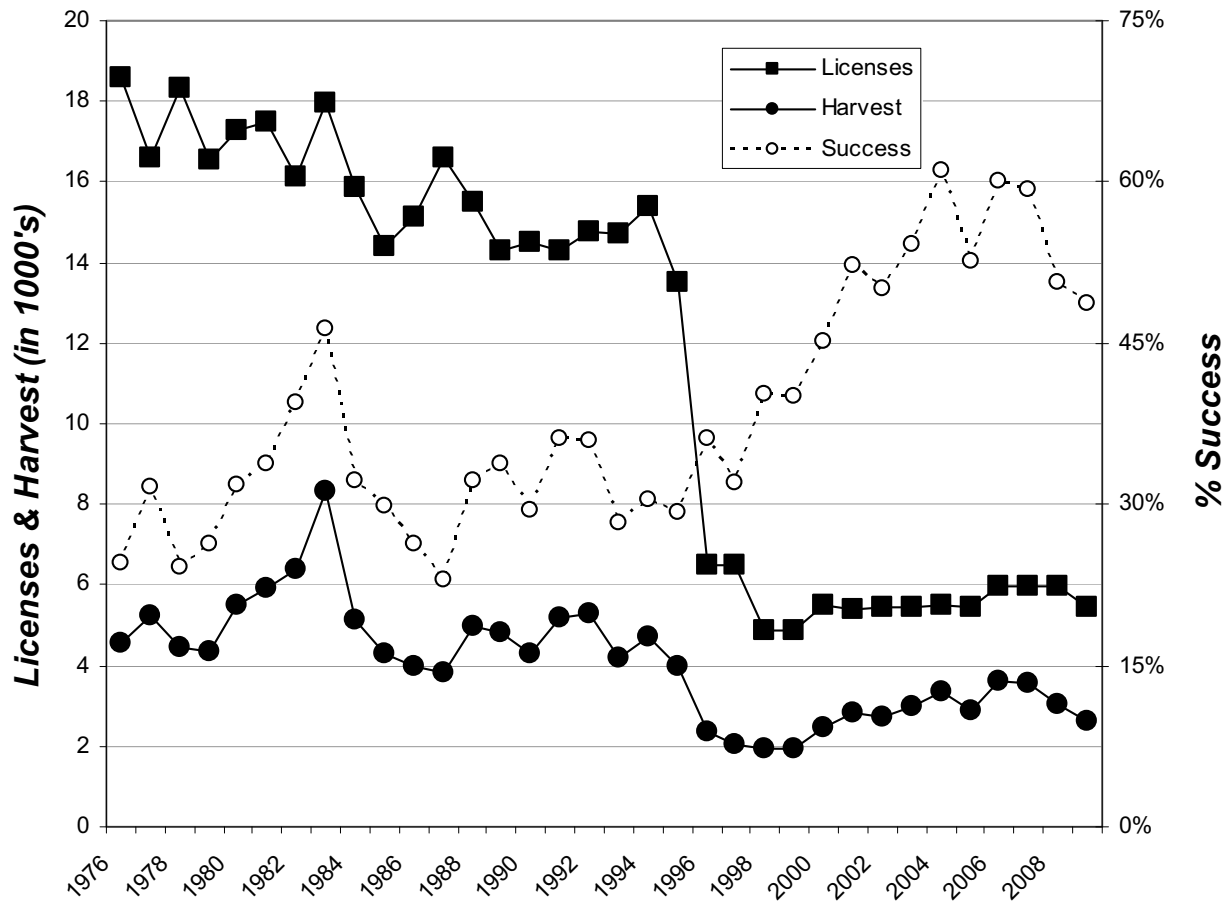
Last Revised: 3 May 2010

Unit/Type	Licenses						Success	Harvest Projections								Total Deer Harvested	Mean Satisfctn Score	Avg Days Hunted
	Resident			Nonresident				Whitetail				Mule Deer						
	Appl. 1st Choice *	Avail.	Sold	Appl. 1st Choice *	Avail.	Sold		Bucks		Does		Bucks		Does				
						Adult	Fawn	Adult	Fawn	Adult	Fawn	Adult	Fawn					
BH1-01	4,815	500	518	424	40	40	49%	144	0	3	3	123	0	0	0	273	4.86	5.23
BH1-11	7,206	4,500	4,506	786	360	359	51%	2,140	43	243	34	0	0	0	0	2,459	4.59	5.22
BD1-03	78	400	410	21	32	32	47%	3	14	98	10	0	11	71	0	208	4.03	3.64
BD1-13	17	800	762	8	64	102	21%	0	26	154	3	0	0	0	0	183	3.80	3.45
BD2-13	106	250	250	47	20	20	57%	0	9	125	19	0	0	0	0	153	4.84	3.04
BD3-13	55	250	251	11	20	20	53%	0	32	110	3	0	0	0	0	145	4.31	4.07
BD4-13	61	500	521	22	40	40	64%	0	39	279	39	0	0	0	0	357	4.88	3.56
	12,338	7,200	7,218	1,319	576	613	48%	2,287	163	1,011	111	123	11	71	3	3,781	4.53	4.75

Satisfaction scale of 1=very dissatisfied to 7=very satisfied.

* Number of 1st drawing applicants with that season as 1st choice.

Black Hills Buck/Any Deer 1976-2009



Black Hills Antlerless Deer 1990-2009

