

DUCKS (all species)

The 2009 duck season was open 26 September 2009 - 14 January 2010 statewide, although some units/zones may have opened later and/or closed sooner. The daily bag was 6 ducks, which could include no more than 5 mallards (up to 2 hens), 2 scaup, 2 redheads, 3 wood ducks, 1 canvasback or 1 pintail. The daily limit on mergansers was 5, which could include no more than 2 hooded mergansers, and the daily limit on coots was 15. Possession was twice the daily bag for all species, not to exceed 12 ducks total. To hunt ducks, residents were required to hold small game, 1-day small game, adult or junior combination, or youth small game licenses plus a migratory bird certification. Nonresidents were required to obtain a nonresident waterfowl license. All hunters age 16 and over were also required to obtain a federal waterfowl stamp.

In 2009, there were an estimated 17,883 hunters who hunted at least one day for ducks (13,873 residents, 4,010 nonresidents). From the survey responses, there were a projected total of 252,882 ducks harvested (204,072 by residents, 48,810 by nonresidents). Nonresidents reported harvesting 13% of their ducks within 20 miles of the Missouri River. Average bag for residents was 14.71, 13.02 for nonresidents with the 10-day or season-long license, and 7.86 for nonresidents with the 3-day license.

The five counties with the highest reported resident hunter numbers were Brown, Day, Kingsbury, Codington, and Lake.

When asked their satisfaction on the season, (1 being most dissatisfied, 7 being most satisfied), duck hunters reported an average satisfaction rating of 4.89 for residents and 5.38 for nonresidents.

The average days hunted by all hunters (7.61 residents, 4.93 10-day or season long nonresidents, and 2.83 3-day nonresidents) projected to a total of 123,959 recreation days for the season.

Comparison of the 1996 - 2009 duck season statistics

Year	Resident Hunters					Nonresident Hunters				
	Number Hunters	Harvest	Ave Day Hunted	Ave Bag	Satisfaction	Number Hunters	Harvest	Ave Day Hunted	Ave Bag	Satisfaction
1996	20,247	221,201	7.12	11.12	n/a	2,789	27,205	4.85	9.75	n/a
1997	26,707	307,998	8.10	11.60	n/a	2,947	36,150	4.89	12.27	n/a
1998	26,575	321,195	7.47	12.15	3.58	3,529	34,474	4.53	9.77	3.15
1999	26,172	334,478	8.06	12.78	4.48	3,288	41,917	4.59	10.95	4.78
2000	21,257	242,117	7.28	11.39	4.49	3,551	38,812	4.43	10.93	4.85
2001	24,554	300,787	7.47	12.25	4.77	3,911	47,148	4.62	12.16	5.21
2002	22,085	284,897	7.51	12.90	4.64	4,139	43,162	4.35	10.43	5.01
2003	19,640	241,376	7.11	12.29	4.86	4,132	44,563	4.33	10.78	5.07
2004	19,179	223,435	7.08	11.65	4.33	4,049	42,074	4.26	10.39	4.60
2005	15,601	180,192	6.73	11.55	4.66	3,917	42,441	4.54	10.84	4.90
2006	14,531	203,870	7.26	14.03	4.95	4,349	50,975	4.64	11.72	5.21
2007	14,519	188,892	7.12	13.01	4.91	3,853	39,594	4.29	10.28	5.04
2008	13,376	175,761	7.44	13.14	5.03	4,058	43,364	4.40	10.69	5.16
2009	13,873	204,072	7.61	14.71	4.89	4,010	48,810	4.58	12.17	5.38

DUCK HARVEST SUMMARY FOR 2009

Last Revised: 24 May 2010

	Resident	Non Residents
No. Resident Hunters Reporting Duck Days	1,246	-
Total Reported Duck Hunted Days	9,486	-
Average Days Hunted Ducks	7.61	-
Total Reported Ducks Bagged	18,332	-
Average Duck Bag for Season	14.71	-
Projected Days Duck Hunting	105,574	-
Projected No. Duck Hunters	13,873	-
Projected Duck Bag	204,072	-
TOTAL RESIDENT DUCK HARVEST = 204,072		
Nonresident 10-day and Season-long Licenses		
No. Hunters Reporting Duck Days	-	815
Total Reported Duck Hunted Days	-	4,017
Average Days Hunted Ducks	-	4.93
Total Reported Ducks Bagged	-	10,614
Average Duck Bag for Season	-	13.02
Projected Days Duck Hunting	-	16,520
Projected No. Duck Hunters	-	3,351
Projected Duck Bag	-	43,630
Duck Harvest Reported Within 20 Miles of Missouri River	-	1,386
Projected Ducks Bagged w/in 20 miles of Missouri River	-	5,697
Nonresident 3-day Licenses		
No. Hunters Reporting Duck Days	-	255
Total Reported Duck Hunted Days	-	721
Average Days Hunted Ducks	-	2.83
Total Reported Ducks Bagged	-	2,004
Average Duck Bag for Season	-	7.86
Projected Days Duck Hunting	-	1,865
Projected No. Duck Hunters	-	659
Projected Duck Bag	-	5,180
Duck Harvest Reported Within 20 Miles of Missouri River	-	189
Projected Ducks Bagged w/in 20 miles of Missouri River	-	489
TOTAL NONRESIDENT DUCK HARVEST = 48,810		
TOTAL DUCK HARVEST = 252,882		
Duck Hunter Mean Satisfaction Score *1*	4.89	5.38

**1* Based on scale of 1-7 with 1=very dissatisfied & 7=very satisfied*

Resident Duck Hunter Distribution by County 2009

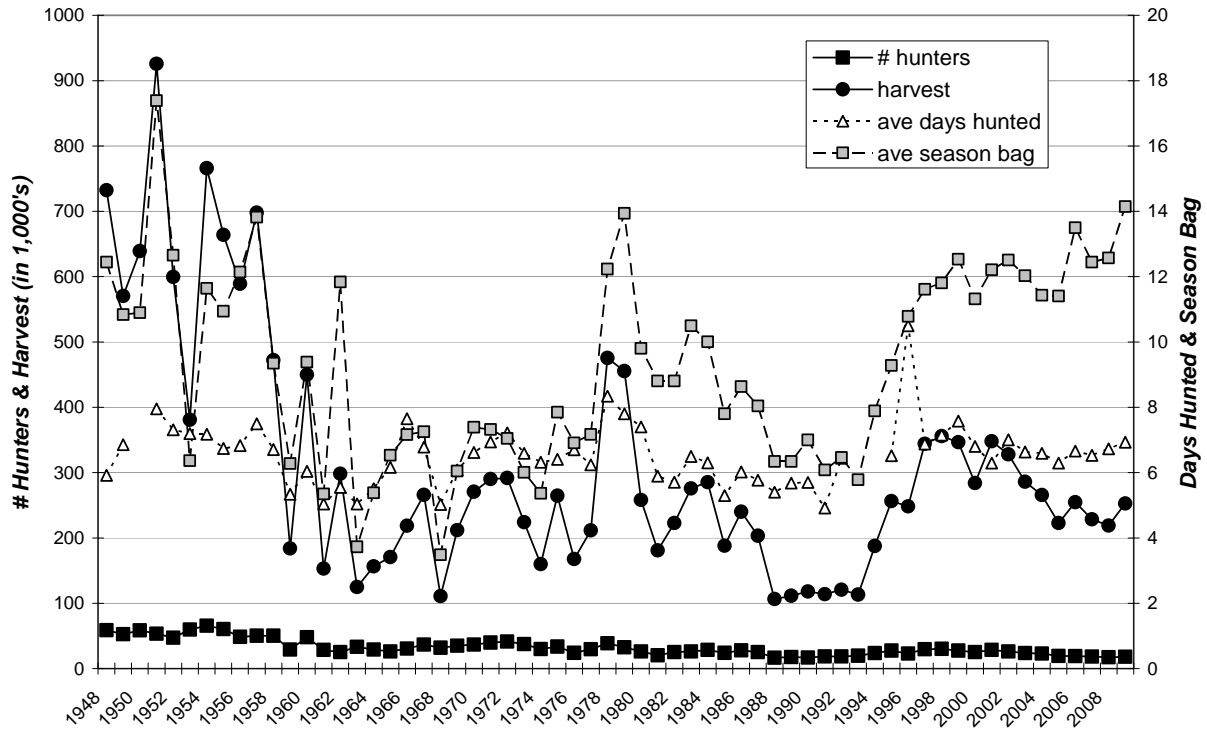
HUNTER DISTRIBUTION

COUNTY	# Reported	# Projected	% of Total	# Proj w/ Unk *
Minnehaha	54	601	4.7	646
Pennington	8	89	0.7	96
Brown	115	1,280	9.9	1,375
Beadle	35	390	3.0	419
Codington	71	791	6.1	850
Brookings	39	434	3.4	466
Yankton	16	178	1.4	191
Davison	10	111	0.9	119
Lawrence	4	45	0.3	48
Aurora	13	145	1.1	156
Bennett	5	56	0.4	60
Bon Homme	13	145	1.1	156
Brule	13	145	1.1	156
Buffalo	0	0	0.0	0
Butte	16	178	1.4	191
Campbell	7	78	0.6	84
Charles Mix	21	234	1.8	251
Clark	50	557	4.3	598
Clay	5	56	0.4	60
Corson	0	0	0.0	0
Day	88	980	7.6	1,053
Deuel	19	212	1.6	228
Dewey	1	11	0.1	12
Douglas	8	89	0.7	96
Edmunds	20	223	1.7	240
Fall River	12	134	1.0	144
Faulk	9	100	0.8	107
Grant	13	145	1.1	156
Gregory	0	0	0.0	0
Haakon	1	11	0.1	12
Hamlin	33	367	2.8	394
Hand	5	56	0.4	60
Hanson	17	189	1.5	203
Harding	0	0	0.0	0
Hughes	19	212	1.6	228
Hutchinson	6	67	0.5	72
Hyde	0	0	0.0	0
Jackson	0	0	0.0	0
Jerauld	2	22	0.2	24
Jones	0	0	0.0	0
Kingsbury	73	813	6.3	873
Lake	63	701	5.4	753
Lincoln	11	122	0.9	131
Lyman	4	45	0.3	48
McCook	53	590	4.6	634
McPherson	13	145	1.1	156
Marshall	34	379	2.9	407
Meade	3	33	0.3	35
Mellette	1	11	0.1	12
Miner	12	134	1.0	144
Moody	25	278	2.2	299
Perkins	2	22	0.2	24
Potter	11	122	0.9	131
Roberts	46	512	4.0	550
Sanborn	5	56	0.4	60
Spink	17	189	1.5	203
Stanley	5	56	0.4	60
Sully	6	67	0.5	72
Tripp	5	56	0.4	60
Turner	15	167	1.3	179
Union	3	33	0.3	35
Walworth	5	56	0.4	60
Ziebach	0	0	0.0	0
Shannon	0	0	0.0	0
Unk/Unreported	86	958	-	-
TOTALS:	1,246	13,873	100%	13,877

Last Revised: 24 May 2010

* Includes unknown county projection values by assuming unknown county values are distributed the same as reported county values. Total values may be different due to rounding.

STATEWIDE DUCK (all species) HARVEST, 1948-2009



STATEWIDE DUCK SEASON PARTICIPATION, 1948-2009

