

# **EAST RIVER FIREARM DEER**

There were 48,330 licenses issued for the 2009 East River Firearm Deer season (43,617 regular, 401 Special Buck and 4,312 Landowner Own Land Only) for a total of 78,276 total tags.

The East River season was open 16 days from November 21 through December 6 in all units. The season was also open from Dec. 26 – Jan. 3 for all unfilled and unsold antlerless deer tags. Beginning December 26, all unused and unsold tags for “any deer” and “any whitetail” converted to their respective antlerless tags.

A random sample of 18,462 hunters was taken from the regular East River season, 2,197 from the Landowner Own Land Only licenses, and all 401 Special Buck hunters. The response rates were 81% for the regular East River Deer, 74% for Landowner East River Deer and 88% for Special Buck. Of all responding hunters, 49% of regular East River, 36% of Landowner Own Land and 29% of Special Buck hunters responded over the Internet.

Respondents reported hunting an average of 4.52 days per hunter for the regular season, 4.47 days for Landowner Own Land and 6.14 days for Special Buck, resulting in a projected total of 210,307 recreation days for the entire East River season. Hunters reported harvesting approximately 86% of their deer during the regular season and 14% from December 26 - January 3.

The East River projected deer harvest was 29,931 for the regular season, 2,598 for Landowner Own Land, and 188 for the Special Buck season. Success rates were 42% for the regular season, 38% for Landowner Own Land, and 47% for Special Buck. Success for the regular East River season “any deer and any antlerless deer” and “any whitetail and antlerless whitetail” license 1<sup>st</sup> tags (any) was 50% and success for 2<sup>nd</sup> (antlerless only) tags was 37%. Success for “any antlerless deer and any antlerless deer” and “antlerless whitetail and antlerless whitetail” license 1<sup>st</sup> tags was 51% and success for 2<sup>nd</sup> tags was 23%.

The mean satisfaction score for those responding to the regular East River survey was 4.41, for the Landowner Own Land survey was 4.57, and for the Special Buck survey was 4.83 (1 = “very dissatisfied” and 7 = “very satisfied”).

Summary comparison of the 1999-2009 East River Deer seasons (including Special Buck and Landowner)

YEAR	Licenses Sold				Harvest				Total Harvest	Success	Avg Days	Avg Satis
	Resident		Nonres		Bucks		Does					
	Lics	Tags	Lics	Tags	WT	Mule	WT	Mule				
1999	35,373	40,287	213	326	13,294	547	11,196	269	25,306	62%	3.54	4.86
2000	38,129	43,744	238	383	14,641	505	12,170	231	27,547	62%	3.05	4.99
2001	41,550	54,651	452	819	14,835	465	15,276	439	31,015	56%	3.79	4.83
2002	42,714	56,826	503	889	15,365	543	17,489	441	33,838	59%	3.93	5.01
2003	45,846	65,567	837	1,581	15,251	488	21,911	476	38,126	57%	4.40	5.14
2004	47,942	71,443	1,134	2,157	13,953	519	22,991	498	37,961	52%	4.42	4.90
2005	47,649	71,362	1,316	2,462	17,337	559	24,636	535	43,067	58%	4.06	5.01
2006	48,608	74,462	1,506	2,804	17,444	544	23,503	421	41,912	54%	4.56	4.82
2007	48,708	74,502	1,760	3,340	17,609	593	20,311	562	39,075	50%	4.52	4.72
2008	47,308	73,592	1,672	3,191	16,951	646	20,239	642	38,478	50%	4.79	4.71
2009	46,533	74,613	1,797	3,663	13,733	511	17,741	735	32,717	42%	4.53	4.41

# 2009 East River Deer Harvest Projections

Last Revised:  
12-Apr-10

Unit	Harvest Projections														Total Deer Harvested	Mean Satisfact Rating	Average Days Hunted			
	Licenses				Tags sold	Hunters	Response Rate	Unit Success	Whitetail				Mule Deer							
	Resident		Nonresident						Bucks		Does		Bucks					Does		
	Avail.	Sold	Avail.	Sold					Adult	Fawn	Adult	Fawn	Adult	Fawn				Adult	Fawn	
Aurora	775	750	leftovers	37	1,321	749	78%	#	53%	175	54	404	49	2	2	10	0	697	4.93	3.92
Beadle	1,400	1,368	leftovers	50	2,027	1,352	80%	#	48%	396	58	447	55	3	0	10	7	977	4.36	4.83
Bon Homme	720	730	leftovers	3	933	705	78%	#	47%	125	57	224	26	2	0	0	0	434	4.71	4.53
Brookings	1,100	1,119	leftovers	0	1,319	1,119	84%	#	39%	180	35	275	20	0	0	0	0	510	4.08	5.29
Brown	3,200	2,803	leftovers	177	5,549	2,814	78%	#	39%	823	94	1,018	207	0	6	6	6	2,161	4.08	5.14
Brule	1,650	1,320	leftovers	89	2,818	1,319	79%	#	42%	396	73	489	62	80	0	62	10	1,173	4.81	4.25
Buffalo	400	340	leftovers	61	802	380	78%	#	46%	177	14	132	14	21	0	9	0	368	5.24	3.48
Campbell	770	560	leftovers	81	1,282	593	78%	#	49%	245	28	289	26	2	0	39	4	634	4.80	4.30
Charles Mix	1,300	1,300	leftovers	17	1,667	1,230	82%	#	52%	288	67	320	70	32	6	73	6	862	4.90	4.53
Clark	1,500	1,400	leftovers	87	2,671	1,422	81%	#	34%	265	67	487	95	0	0	4	4	921	4.26	4.65
Clay	750	743	leftovers	14	957	701	75%	#	39%	86	32	221	29	2	0	0	0	370	4.39	4.81
Codington	1,000	989	leftovers	26	1,015	938	80%	#	33%	106	25	161	44	0	0	0	0	335	4.04	4.60
Davison	750	764	leftovers	14	778	677	76%	#	49%	148	26	177	26	0	0	0	0	378	4.51	4.30
Day	1,300	1,292	leftovers	28	1,939	1,277	83%	#	41%	270	55	401	55	0	0	6	0	786	4.12	4.29
Deuel	950	947	leftovers	13	1,260	951	82%	#	38%	203	51	192	35	0	0	0	0	482	4.11	4.87
Douglas	600	467	leftovers	9	952	466	76%	#	35%	106	28	165	32	0	0	2	0	333	4.44	5.12
E Sully	550	399	leftovers	32	862	405	77%	#	48%	180	17	177	20	7	0	15	0	416	4.94	3.83
Edmunds	1,400	1,187	leftovers	173	4,080	1,310	76%	#	40%	362	151	872	201	0	0	22	7	1,615	4.13	4.67
Faulk	1,300	985	leftovers	116	3,303	1,060	82%	#	46%	352	118	876	148	0	12	12	3	1,522	4.78	4.01
Grant	900	911	leftovers	0	911	911	83%	#	47%	119	44	227	31	3	0	3	0	426	4.07	5.13
Hamlin	1,000	968	leftovers	38	1,608	979	82%	#	37%	129	47	351	58	3	0	3	3	592	4.06	4.95
Hand	1,050	1,009	leftovers	58	2,134	1,023	82%	#	53%	309	67	638	76	8	3	20	3	1,124	4.85	4.06
Hanson	600	605	leftovers	5	610	527	83%	#	43%	123	19	107	6	2	0	4	0	261	4.13	4.35
Hughes	475	479	leftovers	7	892	465	84%	#	49%	197	18	107	11	34	2	61	11	440	5.27	4.20
Hutchinson	700	708	leftovers	8	966	696	84%	#	42%	131	41	200	33	2	0	0	0	407	4.36	4.19
Hyde	900	578	leftovers	47	1,250	602	75%	#	53%	285	36	290	36	14	0	5	0	666	5.14	3.72
Jerauld	725	628	leftovers	40	1,151	619	78%	#	52%	195	27	333	29	7	0	4	0	595	5.08	3.80
Kingsbury	1,600	1,587	leftovers	30	2,019	1,504	82%	#	34%	256	40	337	55	0	0	0	0	688	3.94	4.47
Lake	800	811	leftovers	0	1,214	811	80%	#	32%	112	40	211	20	0	0	2	2	388	3.78	4.87
Lincoln	450	458	leftovers	0	558	458	85%	#	36%	82	19	95	2	2	0	0	0	200	4.09	4.77
Marshall	1,200	1,107	leftovers	103	2,015	1,187	79%	#	38%	262	61	361	67	0	0	3	3	756	4.42	4.71
McCook	900	914	leftovers	3	1,275	905	83%	#	34%	124	36	243	36	0	0	0	0	440	3.91	4.96
McPherson	1,200	1,046	leftovers	119	2,330	1,095	82%	#	50%	354	94	581	103	6	3	12	6	1,160	4.67	3.87
Miner	1,075	903	leftovers	38	1,457	891	82%	#	36%	169	42	262	49	0	0	8	0	530	3.92	4.26
Minnehaha	1,300	1,313	leftovers	10	1,723	1,285	81%	#	34%	174	43	302	59	0	0	3	0	582	3.99	5.26
Moody	700	706	leftovers	0	907	706	84%	#	32%	130	24	136	4	0	0	0	0	295	3.92	5.35
Potter	1,050	829	leftovers	50	1,758	821	78%	#	50%	349	47	354	39	26	3	50	5	873	5.02	3.64
Roberts	1,000	1,021	leftovers	0	1,021	1,019	86%	#	45%	150	29	247	32	0	0	0	0	459	4.13	4.60
Sanborn	850	748	leftovers	33	1,163	712	79%	#	45%	154	50	282	36	2	0	2	0	527	4.50	4.43
Spink	1,500	1,450	leftovers	65	2,720	1,471	81%	#	46%	462	106	579	84	0	0	7	0	1,238	4.43	4.23
Turner	900	892	leftovers	13	1,305	851	78%	#	24%	80	42	164	24	0	0	5	0	315	3.66	5.35
Union	800	808	leftovers	5	963	793	82%	#	44%	121	34	249	19	0	0	0	0	423	4.38	4.95
W Sully	650	564	leftovers	32	1,192	573	87%	#	46%	194	33	132	15	54	10	109	6	552	5.36	3.63
Walworth	850	609	leftovers	66	1,350	642	80%	#	50%	250	31	275	49	22	0	38	11	675	4.88	4.02
Yankton	700	705	leftovers	0	955	705	84%	#	36%	104	31	178	24	4	0	2	2	346	4.41	4.67
<b>Totals</b>	<b>45,290</b>	<b>41,820</b>	<b>leftovers</b>	<b>1,797</b>	<b>70,982</b>	<b>41,719</b>	<b>80.7%</b>	<b>#</b>	<b>42%</b>	<b>9,897</b>	<b>2,151</b>	<b>14,572</b>	<b>2,213</b>	<b>342</b>	<b>47</b>	<b>611</b>	<b>100</b>	<b>29,931</b>	<b>4.41</b>	<b>4.52</b>

The response rate for all units combined was: **81%**

# Units less than 85% response rate & harvest projections may not be within +/- 15% of sample statistic.

## 2009 East River Deer harvest by date

	Total	Nov 21- Dec 6	Dec 26- Jan 3
Reports	10,472	8,983	1,489
Percent of total		86%	14%
Projected	29,931	25,675	4,256

## 2009 East River Deer antlerless harvest by date

	Total	Nov 21- Dec 6	Dec 26- Jan 3
Reports	6,819	5,330	1,489
Percent of total		78%	22%
Projected	19,692	15,436	4,256

# 2009 East River Deer Harvest Projections

2009 East River Deer Harvest Projections																		
Last Revised:	Licenses						Harvest Projections											
23-Apr-10	Resident			Nonresident													Total	
Unit/Type	Appl. 1st	Choice *	Avail.	Sold	Avail.	Sold	Success			Whitetail				Mule Deer				Deer
							1st tag	2nd tag	3rd tag	Bucks		Does		Bucks		Does		Harvest
										Adult	Fawn	Adult	Fawn	Adult	Fawn	Adult	Fawn	
01A-01	1,077	600	622	leftovers	0	32%				170	7	32	4	0	0	3	0	201
01A-03	46	300	299	leftovers	2	38%				0	14	77	20	0	0	0	0	115
01A-09	75	400	392	leftovers	8	42%	20%			4	22	193	36	0	0	0	0	265
03A-01	539	400	411	leftovers	0	43%				158	6	12	5	0	0	0	0	177
03A-08	1,700	1,600	1,609	leftovers	0	47%	36%			650	60	550	81	0	0	0	0	1,330
03A-09	60	1,200	783	leftovers	177	44%	17%			15	28	456	121	0	6	6	6	654
04A-01	754	700	709	leftovers	0	49%				268	16	55	8	3	0	0	0	349
04A-03	10	100	88	leftovers	12	43%				0	0	33	9	0	0	0	0	43
04A-08	431	300	308	leftovers	0	45%	43%			123	16	140	6	0	0	10	0	289
04A-09	29	300	263	leftovers	38	51%	22%			5	27	219	32	0	0	0	7	295
05A-01	872	500	515	leftovers	0	30%				106	11	35	3	0	0	0	0	156
05A-03	34	500	474	leftovers	26	36%				0	14	126	41	0	0	0	0	180
06A-01	1,224	600	619	leftovers	0	45%				180	9	85	6	0	0	0	0	280
06A-03	31	300	300	leftovers	0	40%				0	12	93	15	0	0	0	0	119
06A-09	67	200	200	leftovers	0	42%	13%			0	14	97	0	0	0	0	0	111
07A-01	856	300	305	leftovers	0	40%				99	2	17	2	4	0	0	0	122
07A-03	21	150	150	leftovers	0	27%				0	5	30	5	0	0	0	0	40
07A-09	75	250	250	leftovers	0	47%	27%			5	24	131	17	0	0	2	2	184
08A-11	536	350	377	leftovers	0	51%				148	7	33	4	0	0	0	0	191
08A-13	20	400	387	leftovers	14	47%				0	19	144	22	0	0	0	0	187
10A-01	133	50	52	leftovers	0	61%				19	0	11	0	0	0	0	0	32
10A-13	14	200	171	leftovers	30	44%				0	0	75	8	0	0	7	0	88
10A-18	607	275	283	leftovers	0	68%	44%			156	6	132	14	2	0	3	0	326
10A-19	40	250	244	leftovers	7	62%	37%			0	48	186	27	0	0	0	0	252
12A-01	660	270	283	leftovers	0	59%				125	8	25	0	2	0	0	0	167
12A-03	14	250	247	leftovers	3	50%				0	19	99	10	0	0	0	0	126
12A-09	41	200	200	leftovers	0	49%	15%			0	29	100	16	0	0	0	0	141
13A-08	746	550	555	leftovers	0	41%	33%			121	14	126	13	80	0	59	6	417
13A-18	123	600	569	leftovers	31	52%	34%			262	32	193	24	0	0	4	0	520
13A-19	13	500	196	leftovers	58	60%	25%			13	27	170	26	0	0	4	0	236
14A-08	126	150	151	leftovers	0	55%	33%			53	2	42	7	21	0	9	0	134
14A-18	9	250	189	leftovers	61	53%	36%			124	12	90	7	0	0	0	0	233
16A-08	111	20	20	leftovers	0	70%	20%			13	2	2	0	2	0	0	0	20
16A-09	9	50	41	leftovers	9	63%	21%			0	2	16	3	0	0	39	0	44
16A-18	363	400	403	leftovers	0	58%	34%			230	15	143	10	0	0	4	0	416
16A-19	10	300	96	leftovers	72	54%	29%			3	8	128	13	0	0	0	0	155
17A-01	856	250	258	leftovers	0	59%				108	7	10	3	32	0	3	0	151
17A-03	17	300	291	leftovers	9	45%				0	9	36	19	0	6	54	6	135
17A-11	567	400	409	leftovers	0	60%				176	14	63	3	0	0	0	0	245
17A-19	43	350	342	leftovers	8	53%	26%			5	37	212	45	0	0	16	0	331
18A-01	389	300	303	leftovers	0	35%				90	0	21	0	0	0	0	0	105
18A-08	788	500	510	leftovers	0	33%	33%			174	32	142	22	0	0	0	0	363
18A-09	33	700	587	leftovers	87	46%	17%			0	36	324	74	0	0	0	0	453
19A-01	499	350	357	leftovers	0	40%				83	12	44	3	2	0	0	0	142
19A-03	12	200	188	leftovers	12	37%				0	5	65	3	0	0	0	0	74
19A-09	24	200	198	leftovers	2	48%	21%			3	15	112	23	0	0	0	0	154
22A-03	54	700	673	leftovers	28	36%				0	24	210	21	0	0	6	0	256
22A-08	1,263	600	619	leftovers	0	52%	34%			270	30	191	33	0	0	0	0	530
23A-01	469	350	360	leftovers	0	40%				113	14	16	5	0	0	0	0	145
23A-03	16	300	287	leftovers	13	37%				0	10	77	18	0	0	0	0	110
23A-08	462	300	300	leftovers	0	35%	39%			90	27	99	12	0	0	0	0	228
25A-18	350	350	362	leftovers	0	34%	30%			106	15	98	14	0	0	0	0	234
25A-19	9	250	105	leftovers	9	58%	25%			0	12	67	17	0	0	2	0	99
26A-06	986	800	823	leftovers	0	43%	43%	18%		362	75	415	48	0	0	0	0	901
26A-07	26	600	364	leftovers	173	51%	39%	21%		0	76	457	153	0	0	22	7	714
28A-06	763	700	706	leftovers	0	51%	58%	27%		352	65	495	59	0	12	3	0	984
28A-07	27	600	279	leftovers	116	72%	47%	20%		0	53	382	89	0	0	9	0	538
29A-01	897	450	459	leftovers	0	44%				119	13	72	0	3	0	0	0	204
29A-03	92	450	452	leftovers	0	49%				0	31	155	31	0	0	3	0	222
32A-01	460	400	404	leftovers	0	27%				59	16	29	0	3	0	3	0	110
32A-08	334	250	251	leftovers	0	37%	37%			70	18	87	22	0	0	0	0	196
32A-09	33	350	313	leftovers	38	53%	28%			0	13	235	35	0	0	0	0	286
33A-08	305	100	105	leftovers	0	53%	32%			46	3	29	3	3	0	6	0	91
33A-18	696	450	464	leftovers	0	61%	49%			247	17	229	18	0	0	3	0	517
33A-19	13	500	440	leftovers	58	64%	32%			17	47	380	55	5	3	11	3	516
34A-01	417	300	310	leftovers	0	48%				123	2	28	0	2	0	2	0	150
34A-03	9	300	295	leftovers	5	37%				0	17	80	6	0	0	2	0	111

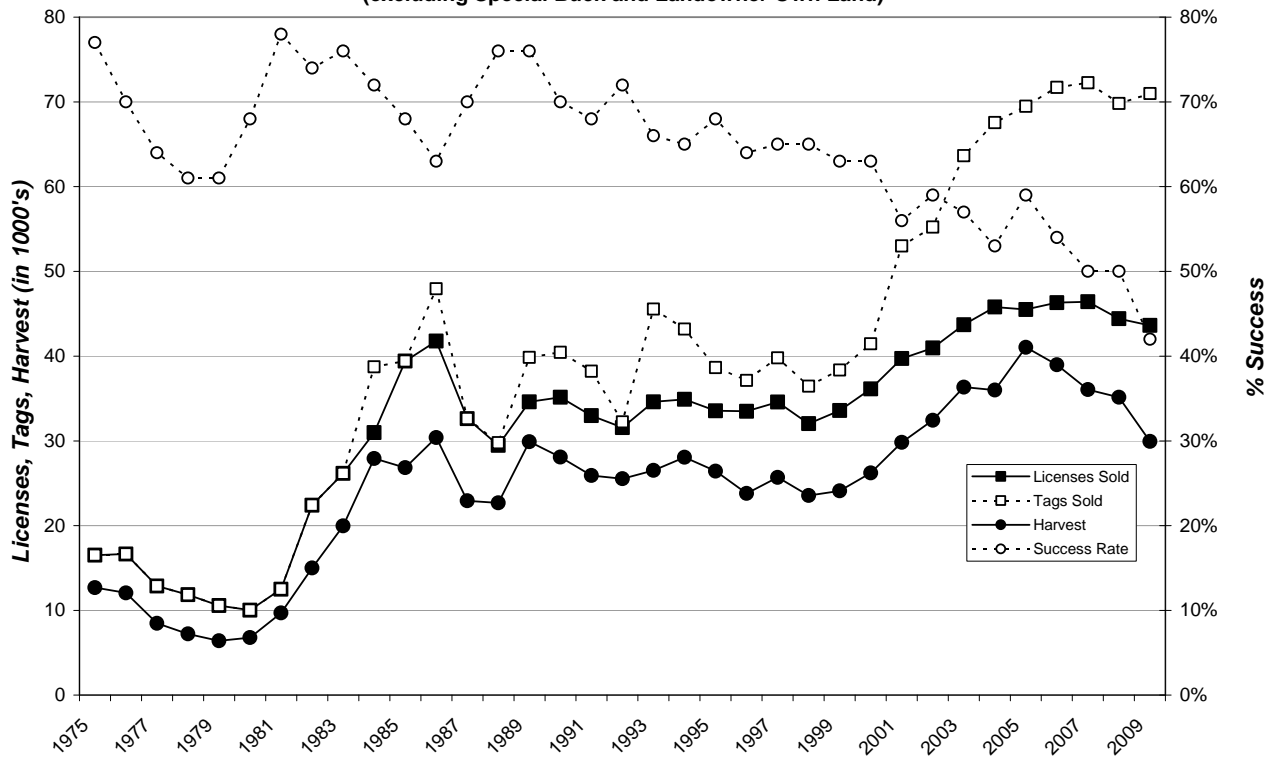
(Continued next page)

Last Revised:		Licenses					Harvest Projections										Total Deer
23-Apr-10		Resident			Nonresident		Success			Whitetail				Mule Deer			
Unit/Type	Appl. 1st Choice *	Avail.	Sold	Avail.	Sold	1st tag	2nd tag	3rd tag	Bucks	Does	Bucks	Does	Bucks	Does	Bucks	Does	Fawn
									Adult	Fawn	Adult	Fawn	Adult	Fawn	Adult	Fawn	Adult
36A-01	159	75	80	leftovers	0	65%			37	0	4	0	12	0	0	0	52
36A-08	261	100	105	leftovers	0	63%	35%		43	0	24	3	22	0	16	2	109
36A-09	3	125	119	leftovers	7	60%	28%		5	10	34	3	0	2	45	9	115
36A-18	86	175	175	leftovers	0	63%	26%		112	7	46	5	0	0	0	0	164
37A-11	610	250	264	leftovers	0	54%			123	8	14	4	0	0	0	0	142
37A-13	15	200	200	leftovers	2	41%			5	9	56	9	0	0	0	0	82
37A-19	35	250	244	leftovers	6	49%	21%		3	24	130	20	0	0	0	0	183
38A-08	177	50	52	leftovers	0	57%	35%		11	0	17	3	14	0	5	0	50
38A-18	224	450	439	leftovers	11	64%	41%		274	23	169	24	0	0	0	0	493
38A-19	6	400	87	leftovers	36	64%	36%		0	13	104	9	0	0	0	0	123
40A-01	143	50	51	leftovers	0	75%			26	0	4	0	7	0	4	0	38
40A-13	12	200	126	leftovers	8	48%			5	2	56	0	0	0	0	0	64
40A-18	403	275	283	leftovers	0	55%	38%		153	11	93	14	0	0	0	0	268
40A-19	8	200	168	leftovers	32	63%	41%		12	14	180	15	0	0	0	0	224
42A-01	1,274	900	915	leftovers	0	37%			247	11	83	6	0	0	0	0	337
42A-03	28	300	285	leftovers	15	27%			0	9	57	11	0	0	0	0	80
42A-09	70	400	387	leftovers	15	44%	20%		10	21	197	37	0	0	0	0	272
43A-01	489	200	208	leftovers	0	35%			61	3	12	0	0	0	0	0	72
43A-03	29	200	200	leftovers	0	24%			0	12	35	0	0	0	0	0	48
43A-08	362	150	153	leftovers	0	37%	29%		51	5	46	2	0	0	0	0	102
43A-09	49	250	250	leftovers	0	46%	20%		0	20	118	18	0	0	2	2	166
44A-01	627	250	258	leftovers	0	40%			82	3	14	2	2	0	0	0	103
44A-03	19	100	100	leftovers	0	28%			0	6	22	0	0	0	0	0	28
44A-09	55	100	100	leftovers	0	54%	16%		0	10	59	0	0	0	0	0	69
46A-01	585	300	309	leftovers	0	35%			78	5	23	5	0	0	0	0	109
46A-03	24	250	247	leftovers	3	39%			0	3	81	12	0	0	0	0	98
46A-08	284	150	158	leftovers	0	30%	35%		43	14	51	0	0	0	0	0	107
46A-09	27	200	200	leftovers	0	40%	19%		3	14	87	19	0	0	0	0	125
47A-08	826	700	718	leftovers	0	52%	44%		343	54	256	43	6	3	12	6	714
47A-09	21	500	328	leftovers	119	60%	37%		11	40	326	60	0	0	0	0	446
48A-01	403	400	405	leftovers	0	41%			123	6	29	11	0	0	0	0	167
48A-08	577	400	405	leftovers	0	38%	38%		139	28	126	19	0	0	3	3	319
48A-09	23	400	297	leftovers	103	50%	17%		0	27	205	37	0	0	0	0	271
51A-01	347	250	255	leftovers	0	36%			77	2	14	0	0	0	0	0	91
51A-03	19	250	156	leftovers	14	33%			0	7	32	12	0	0	4	0	55
51A-08	334	225	234	leftovers	0	38%	35%		92	7	74	7	0	0	4	0	180
51A-09	18	350	258	leftovers	24	41%	14%		0	25	143	31	0	0	0	0	203
52A-01	540	400	405	leftovers	0	36%			101	9	32	2	0	0	0	0	144
52A-03	27	100	100	leftovers	0	25%			0	2	23	0	0	0	0	0	25
52A-08	192	100	101	leftovers	0	28%	31%		29	4	28	0	0	0	0	0	61
52A-09	34	100	100	leftovers	0	48%	16%		0	9	53	2	0	0	0	0	64
54A-08	418	150	155	leftovers	0	55%	25%		65	5	33	0	23	0	5	0	132
54A-09	7	200	167	leftovers	34	51%	25%		11	14	81	15	0	3	45	5	181
54A-18	298	450	450	leftovers	0	60%	42%		274	23	195	19	3	0	0	0	506
54A-19	8	250	57	leftovers	16	60%	20%		0	5	45	5	0	0	0	0	54
55A-01	1,008	500	521	leftovers	0	45%			147	13	62	16	0	0	0	0	232
55A-03	61	500	500	leftovers	0	45%			3	17	185	17	0	0	0	0	227
56A-01	423	250	260	leftovers	0	57%			113	3	19	0	2	0	0	0	147
56A-03	3	200	127	leftovers	12	34%			0	3	39	3	0	0	2	0	47
56A-08	162	100	101	leftovers	0	36%	50%		33	6	46	7	0	0	0	0	93
56A-09	13	300	260	leftovers	21	54%	20%		8	37	178	25	0	0	0	0	240
57A-01	298	300	310	leftovers	0	47%			112	4	19	8	0	0	0	0	145
57A-08	986	800	806	leftovers	0	49%	43%		347	54	324	43	0	0	4	0	774
57A-09	22	400	334	leftovers	65	52%	29%		4	48	235	33	0	0	4	0	319
59A-08	504	150	155	leftovers	0	71%	31%		56	8	24	0	50	2	19	2	163
59A-09	6	250	159	leftovers	32	52%	27%		2	5	39	0	0	8	90	4	159
59A-18	56	250	250	leftovers	0	55%	35%		135	19	70	15	4	0	0	0	230
59B-08	218	350	333	leftovers	17	54%	38%		175	17	122	9	7	0	15	0	343
59B-09	3	200	66	leftovers	15	44%	24%		6	0	55	11	0	0	0	0	73
61A-01	594	250	255	leftovers	0	32%			76	3	14	0	0	0	0	0	82
61A-03	18	250	243	leftovers	7	25%			0	19	34	5	0	0	0	0	63
61A-09	22	400	394	leftovers	6	26%	9%		4	21	116	18	0	0	0	0	171
62A-01	698	350	362	leftovers	0	44%			121	8	23	0	0	0	0	0	160
62A-03	17	300	296	leftovers	5	42%			0	5	118	8	0	0	0	0	126
62A-09	47	150	150	leftovers	0	60%	27%		0	21	109	11	0	0	0	0	137
63A-08	344	50	51	leftovers	0	65%	35%		16	0	13	0	19	0	5	0	51
63A-09	7	100	62	leftovers	37	63%	37%		2	6	55	4	0	0	21	8	97
63A-18	199	400	400	leftovers	0	59%	45%		229	18	150	26	0	0	2	0	422
63A-19	6	300	96	leftovers	29	48%	13%		4	7	56	19	4	0	10	3	105
<b>Totals</b>	<b>38,256</b>	<b>45,290</b>	<b>41,820</b>	<b>leftovers</b>	<b>1,797</b>	<b>1st tag</b>	<b>2nd tag</b>		<b>9,897</b>	<b>2,151</b>	<b>14,572</b>	<b>2,213</b>	<b>342</b>	<b>47</b>	<b>611</b>	<b>100</b>	<b>29,931</b>
						<b>Type 08/18=</b>	<b>50%</b>	<b>37%</b>									
						<b>Type 09/19=</b>	<b>51%</b>	<b>23%</b>									

\* Number of 1st drawing applicants with that season as 1st choice.

# East River Deer Regular Season 1975-2009

(excluding Special Buck and Landowner Own Land)



# 2009 East River Deer LOL Harvest Projections

Last Revised: 13 April 10

Unit/Type	Licenses		Tags sold	Response Rate	Tag Success	Harvest Projections				Total Deer Harvest	Mean Satisfactn Rating	Average Days Hunted
	Avail.	Sold				Whitetail		Mule Deer				
					Bucks	Does	Bucks	Does				
LO-ST-01	Unltd	1,731	1,731	74%	35%	478	73	43	8	602	4.51	4.22
LO-ST-08	Unltd	2,581	5,162	74%	39%	1,054	868	58	16	1,996	4.61	4.63
<b>Totals</b>		<b>4,312</b>	<b>6,893</b>	<b>73.7%</b>	<b>38%</b>	<b>1,532</b>	<b>941</b>	<b>101</b>	<b>24</b>	<b>2,598</b>	<b>4.57</b>	<b>4.47</b>

# Units less than 85% response rate & harvest projections may not be within +/- 15% of sample statistic.

# 2009 East River LOL Harvest Distribution

Last Revised: 13 Apr 10

County	Reported Harvest					Projected Harvest				Total Projected	%
	Whitetail		Mule Deer		Total	Whitetail		Mule Deer			
	Bucks	Does	Bucks	Does		Bucks	Does	Bucks	Does		
Minnehaha	8	6	0	0	14	23	17	0	0	40	1.5%
Brown	12	5	0	0	17	34	14	0	0	48	1.9%
Beadle	23	17	0	0	40	65	49	0	0	114	4.4%
Codington	8	5	0	0	13	23	14	0	0	37	1.4%
Brookings	8	8	0	0	16	23	23	0	0	46	1.8%
Yankton	17	4	0	1	22	48	11	0	3	63	2.4%
Davison	4	6	0	0	10	11	17	0	0	29	1.1%
Aurora	24	15	0	0	39	68	43	0	0	111	4.3%
Bon Homme	9	13	0	0	22	26	37	0	0	63	2.4%
Brule	22	6	3	1	32	62	17	8	3	91	3.5%
Buffalo	4	3	2	1	10	11	9	6	3	29	1.1%
Campbell	12	3	4	1	20	34	9	11	3	57	2.2%
Charles Mix	30	12	11	1	54	85	34	31	3	153	5.9%
Clark	11	5	0	0	16	31	14	0	0	46	1.8%
Clay	8	2	0	0	10	23	6	0	0	28	1.1%
Day	12	8	1	0	21	34	23	3	0	60	2.3%
Deuel	3	3	0	0	6	9	9	0	0	17	0.7%
Douglas	9	12	1	0	22	26	34	3	0	63	2.4%
Edmunds	10	6	0	0	16	28	17	0	0	46	1.8%
Faulk	20	11	0	0	31	57	32	0	0	88	3.4%
Grant	11	9	0	0	20	31	26	0	0	57	2.2%
Hamlin	6	2	0	0	8	17	6	0	0	23	0.9%
Hand	30	26	9	0	65	85	75	25	0	185	7.1%
Hanson	11	10	0	0	21	31	29	0	0	60	2.3%
Hughes	17	3	2	1	23	48	9	6	3	65	2.5%
Hutchinson	23	15	0	0	38	65	43	0	0	108	4.2%
Hyde	12	8	1	0	21	34	23	3	0	60	2.3%
Jerauld	24	13	0	0	37	68	37	0	0	105	4.1%
Kingsbury	5	6	0	0	11	14	17	0	0	31	1.2%
Lake	10	1	0	0	11	28	3	0	0	31	1.2%
Lincoln	4	4	0	0	8	11	11	0	0	23	0.9%
McCook	10	11	0	0	21	28	32	0	0	60	2.3%
McPherson	12	8	0	0	20	34	23	0	0	57	2.2%
Marshall	3	4	0	0	7	9	11	0	0	20	0.8%
Miner	10	3	0	0	13	28	9	0	0	37	1.4%
Moody	4	5	0	0	9	11	14	0	0	26	1.0%
Potter	9	6	2	0	17	26	17	6	0	48	1.9%
Roberts	19	5	0	0	24	54	14	0	0	68	2.6%
Sanborn	21	12	0	0	33	60	34	0	0	94	3.6%
Spink	19	11	0	0	30	54	32	0	0	85	3.3%
Sully	4	7	0	1	12	11	20	0	3	34	1.3%
Turner	5	0	0	0	5	14	0	0	0	14	0.5%
Union	7	1	0	0	8	20	3	0	0	23	0.9%
Walworth	10	8	0	1	19	28	23	0	3	54	2.1%
Unknown	36	27	2	1	66						
<b>TOTALS</b>	<b>576</b>	<b>355</b>	<b>38</b>	<b>9</b>	<b>978</b>	<b>1,532</b>	<b>941</b>	<b>101</b>	<b>24</b>	<b>2,598</b>	

Any by county projected harvest values will differ from by unit projected harvest values due to incorrect sampling proportions within counties. Use these figures for approximations only!

# 2009 East River Special Buck Harvest Projections

Unit/Type	Licenses				Harvest Projections				Total Deer Harvest	Mean Satisfactn Rating	Average Days Hunted
	Resident		Response Rate	Tag Success	Whitetail		Mule Deer				
	Avail.	Sold			Bucks	Does	Bucks	Does			
ER-01	400	401	88%	47%	153	15	21	0	188	4.83	6.14

# Units less than 85% response rate & harvest projections may not be within +/- 15% of sample statistic.

# 2009 East River Special Buck Harvest Distribution

County	Reported Harvest					Projected Harvest					Projected	%
	Whitetail		Mule Deer		Total	Whitetail		Mule Deer		Total		
	Bucks	Does	Bucks	Does		Bucks	Does	Bucks	Does			
Minnehaha	4	0	0	0	4	5	0	0	0	5	2.4%	
Brown	8	0	0	0	8	9	0	0	0	9	4.9%	
Beadle	3	0	0	0	3	3	0	0	0	3	1.8%	
Codington	2	0	0	0	2	2	0	0	0	2	1.2%	
Brookings	5	1	0	0	6	6	1	0	0	7	3.7%	
Yankton	13	0	0	0	13	15	0	0	0	15	7.9%	
Davison	2	0	0	0	2	2	0	0	0	2	1.2%	
Aurora	1	1	0	0	2	1	1	0	0	2	1.2%	
Bon Homme	5	1	0	0	6	6	1	0	0	7	3.7%	
Brule	0	0	0	0	0	0	0	0	0	0	0.0%	
Buffalo	1	0	0	0	1	1	0	0	0	1	0.6%	
Campbell	1	1	1	0	3	1	1	1	0	3	1.8%	
Charles Mix	5	0	9	0	14	6	0	10	0	16	8.5%	
Clark	7	0	0	0	7	8	0	0	0	8	4.3%	
Clay	2	0	0	0	2	2	0	0	0	2	1.2%	
Day	3	0	0	0	3	3	0	0	0	3	1.8%	
Deuel	0	0	0	0	0	0	0	0	0	0	0.0%	
Douglas	1	0	0	0	1	1	0	0	0	1	0.6%	
Edmunds	1	0	0	0	1	1	0	0	0	1	0.6%	
Faulk	2	1	0	0	3	2	1	0	0	3	1.8%	
Grant	2	1	0	0	3	2	1	0	0	3	1.8%	
Hamlin	5	0	0	0	5	6	0	0	0	6	3.1%	
Hand	5	0	4	0	9	6	0	5	0	10	5.5%	
Hanson	1	0	0	0	1	1	0	0	0	1	0.6%	
Hughes	2	0	0	0	2	2	0	0	0	2	1.2%	
Hutchinson	5	0	0	0	5	6	0	0	0	6	3.1%	
Hyde	4	0	0	0	4	5	0	0	0	5	2.4%	
Jerauld	2	0	0	0	2	2	0	0	0	2	1.2%	
Kingsbury	1	0	0	0	1	1	0	0	0	1	0.6%	
Lake	3	0	0	0	3	3	0	0	0	3	1.8%	
Lincoln	6	1	0	0	7	7	1	0	0	8	4.3%	
McCook	1	1	0	0	2	1	1	0	0	2	1.2%	
McPherson	1	0	0	0	1	1	0	0	0	1	0.6%	
Marshall	5	0	0	0	5	6	0	0	0	6	3.1%	
Miner	1	1	0	0	2	1	1	0	0	2	1.2%	
Moody	1	0	0	0	1	1	0	0	0	1	0.6%	
Potter	0	0	3	0	3	0	0	3	0	3	1.8%	
Roberts	1	0	0	0	1	1	0	0	0	1	0.6%	
Sanborn	0	1	0	0	1	0	1	0	0	1	0.6%	
Spink	4	2	0	0	6	5	2	0	0	7	3.7%	
Sully	3	0	1	0	4	3	0	1	0	5	2.4%	
Turner	7	0	0	0	7	8	0	0	0	8	4.3%	
Union	6	1	0	0	7	7	1	0	0	8	4.3%	
Walworth	1	0	0	0	1	1	0	0	0	1	0.6%	
Unknown	1	0	0	0	1							
<b>TOTALS</b>	<b>134</b>	<b>13</b>	<b>18</b>	<b>0</b>	<b>165</b>	<b>153</b>	<b>15</b>	<b>21</b>	<b>0</b>	<b>188</b>		

Any by county projected harvest values will differ from by unit projected harvest values due to incorrect sampling proportions within counties. Use these figures for approximations only!