

PARTRIDGE

The 2009 partridge season covered 19 September 2009 - 3 January 2010 statewide (except Lacreek National Wildlife Refuge where the season didn't open until 17 October). Harvest surveys were sent to both resident and nonresident hunters. The daily limit was 5 birds, possession 15. To hunt partridge residents were required to hold a small game, 1-day small game, adult or junior combination, or youth small game license; nonresidents were required to obtain the nonresident small game, the nonresident youth small game, or nonresident shooting preserve license. No shooting preserve license holders were surveyed and none of their harvest is included in the data in this report.

In 2009, there were 92,465 resident and 101,922 nonresident licenses issued that allowed holders to hunt partridge. Approximately 8% of residents and nonresidents were surveyed for the upland bird seasons. Survey response rates were 71.4% for residents and 72.2% for nonresidents.

Based on survey responses indicating at least one day of hunting partridge, there were a projected 2,687 resident and 2,511 nonresident partridge hunters.

An estimated 8,391 partridge were harvested (4,675 by residents, 3,716 by nonresidents) during the 2009 season. When asked their satisfaction on the season, (1 being least satisfied, 7 being most satisfied), resident upland bird hunters reported an average satisfaction rating of 4.93 while nonresidents reported an average satisfaction rating of 5.59.

Comparison of the 2000 - 2009 partridge harvests

<i>Year</i>	<i>Resident Hunters</i>				<i>Nonresident Hunters</i>			
	<i>Number Hunters</i>	<i>Harvest</i>	<i>Ave Days Hunted</i>	<i>Ave Bag</i>	<i>Number Hunters</i>	<i>Harvest</i>	<i>Ave Days Hunted</i>	<i>Ave Bag</i>
2000	4,165	17,743	7.50	4.26	2,263	6,065	5.28	2.68
2001	4,520	10,080	7.02	2.23	2,043	4,025	4.92	1.97
2002	4,030	9,471	7.36	2.35	2,750	5,390	4.20	1.96
2003	4,701	10,342	7.35	2.20	2,634	5,347	4.26	2.03
2004	3,357	6,110	6.70	1.82	2,186	3,170	4.45	1.45
2005	3,534	9,047	8.41	2.56	2,236	5,679	4.31	2.54
2006	2,551	4,974	6.87	1.95	2,045	3,681	4.23	1.80
2007	3,767	7,760	8.01	2.06	3,160	6,573	4.66	2.08
2008	2,916	6,065	7.16	2.08	2,945	6,155	4.51	2.09
2009	2,687	4,675	7.23	1.74	2,511	3,716	4.36	1.48

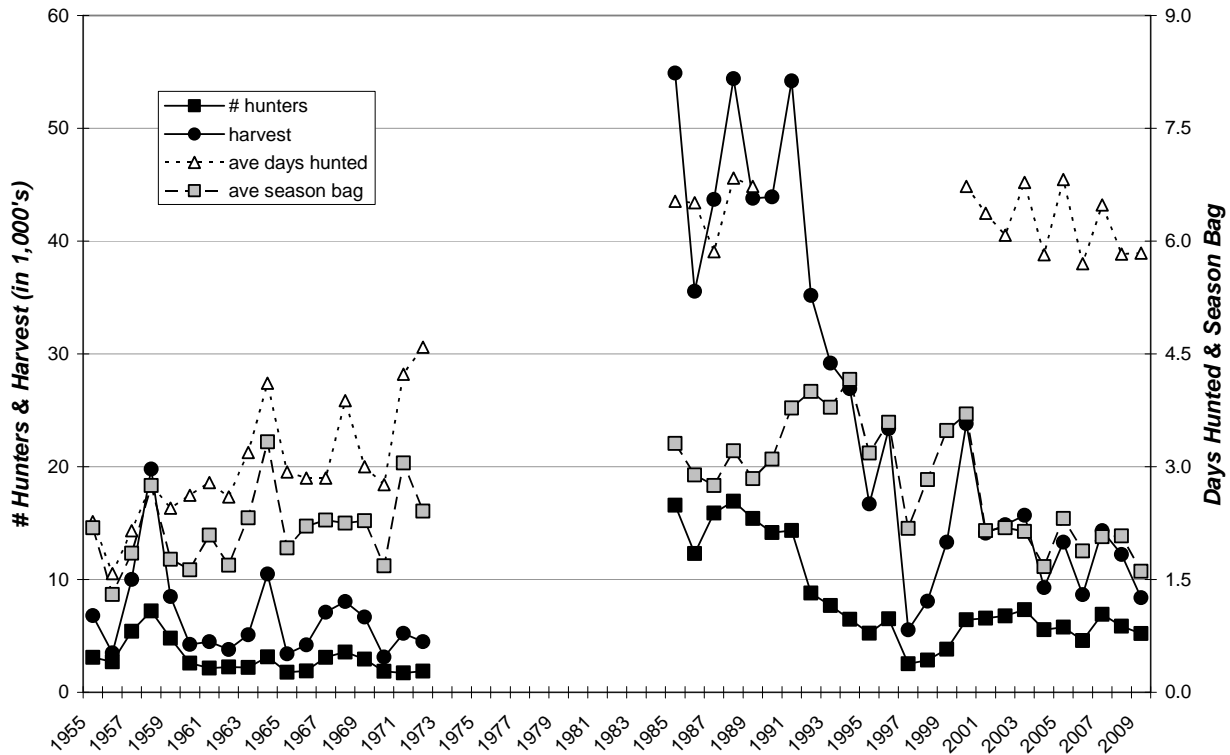
PARTRIDGE HARVEST PROJECTIONS FOR 2009

Revised: 29 April 2010

	RESIDENT TOTALS BY LICENSE TYPE					NONRESIDENT TOTALS		
	Small		Junior	Youth	Sum	Nonres	Youth Sm	Sum
	Game	Combo	Combo	SmGm	Estimates	Sm Game	Game	Estimates
Licenses Sold	34,411	43,675	7,856	6,523	92,465	98,615	3,307	101,922
Projected ACTIVE UPLAND BIRD HUNTERS	28,136	31,732	4,989	5,507	70,433	81,839	2,118	83,957
Number Sampled by Survey	2,838	3,630	630	552	7,650	7,464	273	7,737
Number Responded to Survey	1,996	2,739	359	366	5,460	5,420	169	5,589
Responded and Participated in Season	1,632	1,990	228	309	4,159	4,607	110	4,717
Responded but DID NOT HUNT	364	749	131	57	1,301	813	59	872
Survey Response Rate	70.3%	75.5%	57.0%	66.3%	71.4%	72.6%	61.9%	72.2%
No. Hunters Reporting Partridge Days	49	91	13	6	159	137	4	141
Sum Partridge Hunted Days	342	713	59	36	1,150	600	15	615
Average Days Hunted Partridge	6.98	7.84	4.54	6.00	7.23	4.38	3.75	4.36
Sum Partridge Bagged	70	184	16	6	276	208	1	209
Average Season Partridge Bag	1.43	2.02	1.23	1.00	1.74	1.52	0.25	1.48
Projected Days Partridge Hunting	5,898	11,376	1,289	642	19,427	10,661	289	10,950
Projected No. Partridge Hunters	845	1,451	284	107	2,687	2,434	77	2,511
Projected Partridge Bag	1,208	2,931	349	107	4,675	3,700	19	3,716
	TOTAL PARTRIDGE HARVEST =					8,391		
Upland Bird Hunters Mean Satisfaction Score *	4.85	5.02	4.92	4.78	4.93	5.59	5.53	5.59

* Based on scale of 1-7 with 1="very dissatisfied" and 7="very satisfied"

STATEWIDE PARTRIDGE HARVEST, 1955-2009



Resident Partridge Harvest Distribution by County 2009

COUNTY	HUNTER DISTRIBUTION				HARVEST DISTRIBUTION				Birds/Hunter **
	# Reported	# Projected	% of Total	# Proj w/ Unk *	# Reported	# Projected	% of Total	# Proj w/ Unk *	
Minnehaha	3	51	2.2	58	2	34	0.8	36	0.7
Pennington	3	51	2.2	58	8	136	3.0	142	2.7
Brown	4	68	2.9	77	4	68	1.5	71	1.0
Beadle	3	51	2.2	58	5	85	1.9	89	1.7
Codington	9	152	6.4	173	15	254	5.7	266	1.7
Brookings	2	34	1.4	39	7	119	2.7	124	3.5
Yankton	3	51	2.2	58	3	51	1.1	53	1.0
Davison	0	0	0.0	0	0	0	0.0	0	0
Lawrence	0	0	0.0	0	0	0	0.0	0	0
Aurora	1	17	0.7	19	0	0	0.0	0	0.0
Bennett	1	17	0.7	19	1	17	0.4	18	1.0
Bon Homme	4	68	2.9	77	5	85	1.9	89	1.3
Brule	0	0	0.0	0	0	0	0.0	0	0
Buffalo	0	0	0.0	0	0	0	0.0	0	0
Butte	6	101	4.3	115	34	576	12.9	602	5.7
Campbell	0	0	0.0	0	0	0	0.0	0	0
Charles Mix	4	68	2.9	77	1	17	0.4	18	0.3
Clark	2	34	1.4	39	1	17	0.4	18	0.5
Clay	3	51	2.2	58	0	0	0.0	0	0.0
Corson	7	118	5.0	134	18	305	6.8	319	2.6
Custer	0	0	0.0	0	0	0	0.0	0	0
Day	2	34	1.4	39	1	17	0.4	18	0.5
Deuel	3	51	2.2	58	6	102	2.3	107	2.0
Dewey	3	51	2.2	58	1	17	0.4	18	0.3
Douglas	2	34	1.4	39	8	136	3.0	142	4.0
Edmunds	2	34	1.4	39	0	0	0.0	0	0.0
Fall River	0	0	0.0	0	0	0	0.0	0	0
Faulk	1	17	0.7	19	0	0	0.0	0	0.0
Grant	9	152	6.4	173	11	186	4.2	194	1.2
Gregory	1	17	0.7	19	1	17	0.4	18	1.0
Haakon	1	17	0.7	19	2	34	0.8	36	2.0
Hamlin	0	0	0.0	0	0	0	0.0	0	0
Hand	2	34	1.4	39	0	0	0.0	0	0.0
Hanson	0	0	0.0	0	0	0	0.0	0	0
Harding	4	68	2.9	77	7	119	2.7	124	1.8
Hughes	3	51	2.2	58	3	51	1.1	53	1.0
Hutchinson	1	17	0.7	19	0	0	0.0	0	0.0
Hyde	1	17	0.7	19	2	34	0.8	36	2.0
Jackson	0	0	0.0	0	0	0	0.0	0	0
Jerauld	1	17	0.7	19	2	34	0.8	36	2.0
Jones	0	0	0.0	0	0	0	0.0	0	0
Kingsbury	5	84	3.6	95	3	51	1.1	53	0.6
Lake	3	51	2.2	58	7	119	2.7	124	2.3
Lincoln	1	17	0.7	19	1	17	0.4	18	1.0
Lyman	1	17	0.7	19	1	17	0.4	18	1.0
McCook	3	51	2.2	58	2	34	0.8	36	0.7
McPherson	1	17	0.7	19	0	0	0.0	0	0.0
Marshall	0	0	0.0	0	0	0	0.0	0	0
Meade	4	68	2.9	77	34	576	12.9	602	8.5
Mellette	0	0	0.0	0	0	0	0.0	0	0
Miner	4	68	2.9	77	1	17	0.4	18	0.3
Moody	4	68	2.9	77	14	237	5.3	248	3.5
Perkins	10	169	7.1	192	19	322	7.2	337	1.9
Potter	1	17	0.7	19	0	0	0.0	0	0.0
Roberts	1	17	0.7	19	0	0	0.0	0	0.0
Sanborn	0	0	0.0	0	0	0	0.0	0	0
Spink	1	17	0.7	19	6	102	2.3	107	6.0
Stanley	0	0	0.0	0	0	0	0.0	0	0
Sully	0	0	0.0	0	0	0	0.0	0	0
Tripp	0	0	0.0	0	0	0	0.0	0	0
Turner	2	34	1.4	39	3	51	1.1	53	1.5
Union	2	34	1.4	39	1	17	0.4	18	0.5
Walworth	3	51	2.2	58	1	17	0.4	18	0.3
Ziebach	3	51	2.2	58	23	390	8.7	408	7.6
Shannon	0	0	0.0	0	0	0	0.0	0	0
Todd	0	0	0.0	0	0	0	0.0	0	0
Unknown	19	321	-	-	12	203	-	-	0.6
TOTALS:	159	2,687	101%	2,695	276	4,675	101%	4,685	1.74

Last Revised: 14 May 2010

* Includes unknown county projection values by assuming unknown county values are distributed the same as reported county values. Total values may be different due to rounding.

** Calculation uses "# projected" values without correction for unknown/unreported county values.

Nonresident Partridge Harvest Distribution by County 2009

COUNTY	HUNTER DISTRIBUTION				HARVEST DISTRIBUTION				Birds/Hunter **
	# Reported	# Projected	% of Total	# Proj w/ Unk *	# Reported	# Projected	% of Total	# Proj w/ Unk *	
Minnehaha	0	0	0.0	0	0	0	0.0	0	0
Pennington	0	0	0.0	0	0	0	0.0	0	0
Brown	1	18	0.8	21	0	0	0.0	0	0.0
Beadle	6	107	4.9	123	2	36	1.0	39	0.3
Codington	0	0	0.0	0	0	0	0.0	0	0
Brookings	4	71	3.2	81	2	36	1.0	39	0.5
Yankton	0	0	0.0	0	0	0	0.0	0	0
Davison	0	0	0.0	0	0	0	0.0	0	0
Lawrence	0	0	0.0	0	0	0	0.0	0	0
Aurora	1	18	0.8	21	0	0	0.0	0	0.0
Bennett	0	0	0.0	0	0	0	0.0	0	0
Bon Homme	1	18	0.8	21	0	0	0.0	0	0.0
Brule	4	71	3.2	81	8	142	4.1	153	2.0
Buffalo	0	0	0.0	0	0	0	0.0	0	0
Butte	0	0	0.0	0	0	0	0.0	0	0
Campbell	5	89	4.1	102	5	89	2.6	96	1.0
Chas Mix	0	0	0.0	0	0	0	0.0	0	0
Clark	3	53	2.4	61	0	0	0.0	0	0.0
Clay	0	0	0.0	0	0	0	0.0	0	0
Corson	2	36	1.6	41	5	89	2.6	96	2.5
Custer	0	0	0.0	0	0	0	0.0	0	0
Day	0	0	0.0	0	0	0	0.0	0	0
Deuel	0	0	0.0	0	0	0	0.0	0	0
Dewey	10	178	8.1	204	31	551	16.0	594	3.1
Douglas	0	0	0.0	0	0	0	0.0	0	0
Edmunds	4	71	3.2	81	11	196	5.7	211	2.8
Fall River	0	0	0.0	0	0	0	0.0	0	0
Faulk	3	53	2.4	61	0	0	0.0	0	0.0
Grant	0	0	0.0	0	0	0	0.0	0	0
Gregory	2	36	1.6	41	2	36	1.0	39	1.0
Haakon	1	18	0.8	21	5	89	2.6	96	4.9
Hamlin	0	0	0.0	0	0	0	0.0	0	0
Hand	3	53	2.4	61	2	36	1.0	39	0.7
Hanson	1	18	0.8	21	0	0	0.0	0	0.0
Harding	1	18	0.8	21	0	0	0.0	0	0.0
Hughes	8	142	6.5	163	15	267	7.7	288	1.9
Hutchinson	0	0	0.0	0	0	0	0.0	0	0
Hyde	1	18	0.8	21	0	0	0.0	0	0.0
Jackson	0	0	0.0	0	0	0	0.0	0	0
Jerauld	2	36	1.6	41	2	36	1.0	39	1.0
Jones	4	71	3.2	81	20	356	10.3	384	5.0
Kingsbury	1	18	0.8	21	0	0	0.0	0	0.0
Lake	1	18	0.8	21	1	18	0.5	19	1.0
Lincoln	0	0	0.0	0	0	0	0.0	0	0
Lyman	9	160	7.3	183	9	160	4.6	172	1.0
McCook	1	18	0.8	21	1	18	0.5	19	1.0
McPherson	5	89	4.1	102	6	107	3.1	115	1.2
Marshall	1	18	0.8	21	2	36	1.0	39	2.0
Meade	0	0	0.0	0	0	0	0.0	0	0
Mellette	1	18	0.8	21	3	53	1.5	57	2.9
Miner	1	18	0.8	21	1	18	0.5	19	1.0
Moody	0	0	0.0	0	0	0	0.0	0	0
Perkins	12	214	9.8	245	24	427	12.4	460	2.0
Potter	3	53	2.4	61	17	302	8.8	325	5.7
Roberts	0	0	0.0	0	0	0	0.0	0	0
Sanborn	2	36	1.6	41	0	0	0.0	0	0.0
Spink	5	89	4.1	102	2	36	1.0	39	0.4
Stanley	3	53	2.4	61	1	18	0.5	19	0.3
Sully	1	18	0.8	21	0	0	0.0	0	0.0
Tripp	5	89	4.1	102	6	107	3.1	115	1.2
Turner	0	0	0.0	0	0	0	0.0	0	0
Union	0	0	0.0	0	0	0	0.0	0	0
Walworth	5	89	4.1	102	11	196	5.7	211	2.2
Ziebach	0	0	0.0	0	0	0	0.0	0	0
Shannon	0	0	0.0	0	0	0	0.0	0	0
Todd	0	0	0.0	0	0	0	0.0	0	0
Unknown	18	321	-	-	15	267	-	-	0.8
TOTALS:	141	2,511	99.5%	2,515	209	3,716	99.8%	3,722	1.48

Last Revised: 14 May 2010

* Includes unknown county projection values by assuming unknown county values are distributed the same as reported county values. Total values may be different due to rounding.

** Calculation uses "# projected" values without correction for unknown/unreported county values.