

PHEASANT

The 2009 pheasant season covered 17 October 2009 – 3 January 2010 statewide. There was also a Youth season open 3-7 October on public and private land and an early residents-only season open 10-12 October on public lands only. The daily limit was 3 cock pheasants, possession 15. To hunt pheasants, residents were required to hold small game, 1-day small game, adult or junior combination, or youth small game licenses; nonresidents were required to obtain the nonresident small game the nonresident youth small game, or nonresident shooting preserve license. Harvest surveys were sent to both resident and nonresident hunters. No shooting preserve license holders were surveyed and none of their harvest is included in any of the data in this report.

In 2009, there were 92,465 resident and 101,922 nonresident licenses issued that allowed holders to hunt pheasants. Approximately 8% of residents and nonresidents were surveyed for the upland bird seasons. Survey response rates were 71.4% for residents and 72.2% for nonresidents.

Based on survey responses indicating at least one day of hunting pheasants, there were a projected 69,949 resident (28,032 small game, 31,461 combination, 4,967 youth small game, 5,489 junior combination) and 97,350 nonresident (94,327 small game, 3,023 youth small game) pheasant hunters.

From the survey responses, a projected total of 1,648,191 pheasants were harvested (715,578 by residents, 932,613 by nonresidents) during the 2009 seasons. When asked their satisfaction on the season, (1 being least satisfied, 7 being most satisfied), resident upland bird hunters reported an average satisfaction rating of 4.93 while nonresidents reported a higher satisfaction rating of 5.59.

Approximately 16,325 residents participated in the early, resident-only season. The projected harvest for this season was 32,650 birds.

The Youth-only season (3-7 October) overall participation rate was approximately 7.1% (6.3% Combination license, 5.3% Small Game, 8.9% Junior Combination, 21.6% Youth Small Game); nonresidents were not surveyed on their participation in this season.

The five counties with the highest reported harvests from highest to lowest were Spink, Lyman, Brown, Tripp and Beadle. Lawrence was the only county in the state with no reported pheasant harvest.

Comparison of the 2000 - 2009 Pheasant season statistics

Year	<i>Resident Hunters</i>					<i>Nonresident Hunters</i>				
	<i>Number Hunters</i>	<i>Harvest</i>	<i>Ave Day Hunted</i>	<i>Ave Bag</i>	<i>Satisfaction</i>	<i>Number Hunters</i>	<i>Harvest</i>	<i>Ave Day Hunted</i>	<i>Ave Bag</i>	<i>Satisfaction</i>
2000	79,790	759,601	6.82	9.52	4.71	70,182	688,133	4.31	9.52	5.20
2001	76,772	672,523	6.80	8.76	4.40	73,326	688,531	4.26	9.39	5.17
2002	70,822	587,823	6.84	8.30	4.28	74,874	673,866	4.18	9.00	5.01
2003	78,396	912,529	7.21	11.64	5.08	83,538	902,210	4.21	10.80	5.72
2004	78,984	744,819	7.35	9.43	4.62	91,948	908,446	3.83	9.88	5.25
2005	79,270	947,277	7.94	11.95	5.19	94,956	1,001,786	4.43	10.55	5.83
2006	79,955	881,904	7.63	11.03	4.99	98,213	964,452	4.29	9.82	5.71
2007	77,788	969,238	7.88	12.46	5.39	103,048	1,153,107	4.61	11.19	6.00
2008	75,978	877,546	7.33	11.55	5.31	100,254	1,058,682	4.49	10.56	5.86
2009	69,949	715,578	7.14	10.23	4.93	97,350	932,613	4.33	9.58	5.59

PHEASANT HARVEST PROJECTIONS FOR 2009

Revised: 29 April 2010

	RESIDENT TOTALS BY LICENSE TYPE					NONRESIDENT TOTALS		
	Small		Junior	Youth	Sum	Nonres	Youth Sm	Sum
	Game	Combo	Combo	SmGm	Estimates	Sm Game	Game	Estimates
Licenses Sold	34,411	43,675	7,856	6,523	92,465	98,615	3,307	101,922
Projected ACTIVE UPLAND BIRD HUNTERS	28,136	31,732	4,989	5,507	70,433	81,839	2,118	83,957
Number Sampled by Survey	2,838	3,630	630	552	7,650	7,464	273	7,737
Number Responded to Survey	1,996	2,739	359	366	5,460	5,420	169	5,589
Responded and Participated in Season	1,632	1,990	228	309	4,159	4,607	110	4,717
Responded but DID NOT HUNT	364	749	131	57	1,301	813	59	872
Survey Response Rate	70.3%	75.5%	57.0%	66.3%	71.4%	72.6%	61.9%	72.2%
No. Hunters Reporting Pheasant Days	1,626	1,973	227	308	4,134	5,310	157	5,467
Sum Pheasant Hunted Days	10,365	15,558	1,608	2,002	29,533	23,144	549	23,693
Average Days Hunted Pheasants	6.37	7.89	7.08	6.50	7.14	4.36	3.50	4.33
Sum Pheasants Bagged	14,774	23,576	2,050	1,910	42,310	51,415	975	52,390
Average Pheasant Bag for Season	9.09	11.95	9.03	6.20	10.23	9.68	6.21	9.58
Projected Days Pheasant Hunting	178,564	248,227	35,166	35,679	499,436	411,266	10,581	421,847
Projected No. Pheasant Hunters	28,032	31,461	4,967	5,489	69,949	94,327	3,023	97,350
Projected Pheasant Bag	254,811	375,959	44,852	34,032	715,578	913,085	18,773	932,613
TOTAL PHEASANT HARVEST =						1,648,191		
RESIDENT-ONLY OPENING WEEKEND:								
No. Hunters Reporting Pheasant Days	323	472	66	103	964	-	-	-
Sum Pheasant Hunted Days	507	719	99	158	1,483	-	-	-
Average Days Hunted Pheasants	1.57	1.52	1.50	1.53	1.54	-	-	-
Sum Pheasants Bagged	646	1,025	112	144	1,927	-	-	-
Average Pheasant Bag for Weekend	2.00	2.17	1.70	1.40	2.00	-	-	-
Projected Days Pheasant Hunting	8,743	11,440	2,166	2,809	25,141	-	-	-
Projected No. Pheasant Hunters	5,569	7,526	1,444	1,836	16,325	-	-	-
Projected Pheasant Bag	11,138	16,331	2,455	2,570	32,650	-	-	-
RESIDENT-ONLY WEEKEND PHEASANT HARVEST =						32,650		
MENTORED YOUTH PARTICIPATION:								
No. Hunters Reporting Participation	69	106	NA	NA	175	-	-	-
Projected No. Hunters Participating	1,190	1,690			2,880	-	-	-
Percent Hunters Participating	3.5%	3.9%			3.7%	-	-	-
Upland Bird Hunters Mean Satisfaction Score *	4.85	5.02	4.92	4.78	4.93	5.59	5.53	5.59

* Based on scale of 1-7 with 1="very dissatisfied" and 7="very satisfied"

RESIDENT-ONLY WEEKEND 2009 PHEASANT SEASON PARTICIPATION AND BAG				
<i>Last Revised: 7 May 2010</i>				
	# Days Hunted	# Responded	% of Total	Ave. Bag
Residents	0	4,496	82.3%	
	1	553	10.1%	1.04
	2	303	5.5%	2.53
	3	108	2.0%	5.43

2009 YOUTH-ONLY PHEASANT SEASON PARTICIPATION			
<i>Last Revised: 7 May 2010</i>			
License Type	Number Participated	Did Not Participate	Percent Participated
Small Game	105	1,891	5.3%
Combination	173	2,566	6.3%
Youth Small Game	79	287	21.6%
Junior Combination	32	327	8.9%
Total	389	5,071	7.1%

Total Pheasant Harvest Distribution by County 2009

COUNTY	HUNTER DISTRIBUTION			HARVEST DISTRIBUTION			Birds/Hunter **
	# Projected	% of Total	# Proj w/ Unk *	# Projected	% of Total	# Proj w/ Unk *	
Minnehaha	2,652	1.6	2,772	18,328	1.1	18,937	6.9
Pennington	310	0.2	324	1,498	0.1	1,544	4.8
Brown	9,449	5.9	9,811	88,127	5.5	90,785	9.3
Beadle	8,207	5.1	8,521	81,918	5.1	84,412	10.0
Codington	3,911	2.4	4,068	29,210	1.8	30,125	7.5
Brookings	3,674	2.3	3,831	26,644	1.7	27,492	7.3
Yankton	1,598	1.0	1,668	12,274	0.8	12,671	7.7
Davison	6,765	4.2	7,016	57,990	3.6	59,719	8.6
Lawrence	0	0.0	0	0	0.0	0	0
Aurora	4,144	2.6	4,304	42,826	2.7	44,121	10.3
Bennett	878	0.5	916	8,320	0.5	8,595	9.5
Bon Homme	903	0.6	945	6,620	0.4	6,844	7.3
Brule	7,232	4.5	7,497	76,428	4.8	78,683	10.6
Buffalo	650	0.4	674	6,742	0.4	6,944	10.4
Butte	205	0.1	214	1,137	0.1	1,174	5.5
Campbell	2,202	1.4	2,282	22,708	1.4	23,365	10.3
Charles Mix	4,590	2.9	4,770	43,338	2.7	44,648	9.4
Clark	4,146	2.6	4,305	37,352	2.3	38,474	9.0
Clay	681	0.4	713	4,240	0.3	4,383	6.2
Corson	567	0.4	592	5,292	0.3	5,464	9.3
Custer	87	0.1	90	573	0.0	591	6.6
Day	3,059	1.9	3,178	23,271	1.5	23,985	7.6
Deuel	1,201	0.7	1,254	12,171	0.8	12,571	10.1
Dewey	998	0.6	1,036	11,947	0.7	12,306	12.0
Douglas	1,880	1.2	1,955	17,253	1.1	17,791	9.2
Edmunds	3,820	2.4	3,970	49,083	3.1	50,608	12.8
Fall River	408	0.3	427	3,560	0.2	3,676	8.7
Faulk	3,603	2.2	3,741	39,663	2.5	40,863	11.0
Grant	1,201	0.7	1,254	7,150	0.4	7,387	6.0
Gregory	3,726	2.3	3,864	41,755	2.6	43,000	11.2
Haakon	704	0.4	735	7,188	0.4	7,426	10.2
Hamlin	1,968	1.2	2,052	18,427	1.2	19,018	9.4
Hand	5,192	3.2	5,393	58,563	3.7	60,345	11.3
Hanson	1,299	0.8	1,353	10,504	0.7	10,835	8.1
Harding	223	0.1	232	1,445	0.1	1,492	6.5
Hughes	5,512	3.4	5,729	53,959	3.4	55,639	9.8
Hutchinson	2,145	1.3	2,235	17,451	1.1	18,010	8.1
Hyde	1,184	0.7	1,232	14,103	0.9	14,548	11.9
Jackson	140	0.1	145	1,074	0.1	1,106	7.7
Jerauld	2,225	1.4	2,310	26,841	1.7	27,658	12.1
Jones	1,230	0.8	1,281	15,951	1.0	16,459	13.0
Kingsbury	2,656	1.7	2,764	26,965	1.7	27,811	10.2
Lake	1,938	1.2	2,024	15,476	1.0	15,985	8.0
Lincoln	1,069	0.7	1,120	7,421	0.5	7,675	6.9
Lyman	7,461	4.6	7,745	90,281	5.6	93,031	12.1
McCook	1,884	1.2	1,968	16,013	1.0	16,551	8.5
McPherson	2,756	1.7	2,859	26,766	1.7	27,553	9.7
Marshall	1,146	0.7	1,192	8,077	0.5	8,323	7.0
Meade	153	0.1	161	271	0.0	280	1.8
Mellette	403	0.3	418	3,358	0.2	3,457	8.3
Miner	3,363	2.1	3,502	33,710	2.1	34,783	10.0
Moody	956	0.6	1,000	9,485	0.6	9,805	9.9
Perkins	1,282	0.8	1,335	13,408	0.8	13,834	10.5
Potter	3,514	2.2	3,649	45,100	2.8	46,471	12.8
Roberts	1,341	0.8	1,400	10,262	0.6	10,598	7.7
Sanborn	2,678	1.7	2,785	25,481	1.6	26,273	9.5
Spink	7,555	4.7	7,840	91,011	5.7	93,770	12.0
Stanley	1,313	0.8	1,363	13,035	0.8	13,431	9.9
Sully	2,322	1.4	2,418	27,252	1.7	28,117	11.7
Tripp	7,306	4.5	7,578	84,191	5.3	86,718	11.5
Turner	1,396	0.9	1,461	12,190	0.8	12,604	8.7
Union	629	0.4	658	3,332	0.2	3,445	5.3
Walworth	2,849	1.8	2,959	30,854	1.9	31,800	10.8
Ziebach	122	0.1	126	756	0.0	778	6.2
Shannon	88	0.1	91	408	0.0	419	4.6
Todd	177	0.1	183	959	0.1	986	5.4
Unk/Unreported	6,365	-	-	49,205	-	-	7.7
TOTALS:	167,299	100%	167,288	1,648,191	100%	1,648,192	9.85

Revised: 30 April 2010

* Includes unknown county projection values by assuming unknown county values are distributed the same as reported county values. Total values may be different due to rounding.

** Calculation uses "# projected" values without correction for unknown/unreported county values.

Resident Pheasant Harvest Distribution by County 2009

COUNTY	HUNTER DISTRIBUTION				HARVEST DISTRIBUTION				Birds/Hunter **
	# Reported	# Projected	% of Total	# Proj w/ Unk *	# Reported	# Projected	% of Total	# Proj w/ Unk *	
Minnehaha	121	2,047	3.1	2,147	850	14,376	2.1	14,875	7.0
Pennington	12	203	0.3	213	37	626	0.1	648	3.1
Brown	188	3,181	4.8	3,336	1,792	30,308	4.4	31,361	9.5
Beadle	163	2,758	4.1	2,892	1,867	31,576	4.6	32,673	11.4
Codington	107	1,810	2.7	1,898	884	14,951	2.2	15,470	8.3
Brookings	134	2,267	3.4	2,377	927	15,678	2.3	16,222	6.9
Yankton	66	1,117	1.7	1,171	471	7,966	1.2	8,243	7.1
Davison	103	1,743	2.6	1,828	1,009	17,065	2.5	17,658	9.8
Lawrence	0	0	0.0	0	0	0	0.0	0	0
Aurora	86	1,455	2.2	1,526	906	15,323	2.2	15,855	10.5
Bennett	34	575	0.9	603	373	6,308	0.9	6,527	11.0
Bon Homme	46	778	1.2	816	343	5,801	0.8	6,002	7.5
Brule	97	1,641	2.5	1,721	1,134	19,179	2.8	19,845	11.7
Buffalo	10	169	0.3	177	126	2,131	0.3	2,205	12.6
Butte	10	169	0.3	177	42	710	0.1	735	4.2
Campbell	27	457	0.7	479	227	3,839	0.6	3,972	8.4
Charles Mix	105	1,777	2.7	1,864	911	15,408	2.2	15,943	8.7
Clark	83	1,404	2.1	1,472	716	12,110	1.8	12,531	8.6
Clay	35	592	0.9	621	216	3,653	0.5	3,780	6.2
Corson	23	389	0.6	408	214	3,619	0.5	3,745	9.3
Custer	3	51	0.1	53	17	288	0.0	298	5.6
Day	65	1,100	1.6	1,154	576	9,742	1.4	10,080	8.9
Deuel	51	863	1.3	905	527	8,913	1.3	9,223	10.3
Dewey	19	321	0.5	337	237	4,008	0.6	4,147	12.5
Douglas	48	812	1.2	852	497	8,406	1.2	8,698	10.4
Edmunds	90	1,523	2.3	1,597	1,377	23,289	3.4	24,098	15.3
Fall River	21	355	0.5	372	141	2,385	0.3	2,468	6.7
Faulk	73	1,235	1.9	1,295	840	14,207	2.1	14,700	11.5
Grant	51	863	1.3	905	327	5,530	0.8	5,722	6.4
Gregory	56	948	1.4	994	729	12,329	1.8	12,757	13.0
Haakon	30	508	0.8	533	325	5,497	0.8	5,688	10.8
Hamlin	70	1,184	1.8	1,242	678	11,467	1.7	11,865	9.7
Hand	109	1,844	2.8	1,934	1,326	22,426	3.2	23,205	12.2
Hanson	41	694	1.0	728	339	5,733	0.8	5,932	8.3
Harding	9	152	0.2	159	56	947	0.1	980	6.2
Hughes	130	2,200	3.3	2,307	1,540	26,046	3.8	26,951	11.8
Hutchinson	71	1,201	1.8	1,260	635	10,740	1.6	11,113	8.9
Hyde	31	525	0.8	551	455	7,695	1.1	7,962	14.7
Jackson	3	51	0.1	53	13	220	0.0	228	4.3
Jerauld	41	694	1.0	728	604	10,215	1.5	10,570	14.7
Jones	39	660	1.0	692	559	9,454	1.4	9,782	14.3
Kingsbury	77	1,303	2.0	1,366	826	13,970	2.0	14,455	10.7
Lake	83	1,404	2.1	1,472	674	11,399	1.6	11,795	8.1
Lincoln	59	998	1.5	1,047	403	6,816	1.0	7,053	6.8
Lyman	141	2,386	3.6	2,502	2,072	35,043	5.1	36,260	14.7
McCook	84	1,421	2.1	1,490	791	13,378	1.9	13,843	9.4
McPherson	44	744	1.1	780	369	6,241	0.9	6,458	8.4
Marshall	32	541	0.8	567	186	3,146	0.5	3,255	5.8
Meade	8	135	0.2	142	16	271	0.0	280	2.0
Mellette	7	118	0.2	124	47	795	0.1	823	6.7
Miner	103	1,743	2.6	1,828	1,168	19,754	2.9	20,440	11.3
Moody	46	778	1.2	816	484	8,186	1.2	8,470	10.5
Perkins	40	677	1.0	710	456	7,712	1.1	7,980	11.4
Potter	73	1,235	1.9	1,295	1,012	17,116	2.5	17,710	13.9
Roberts	55	931	1.4	976	431	7,289	1.1	7,542	7.8
Sanborn	72	1,218	1.8	1,277	713	12,059	1.7	12,478	9.9
Spink	135	2,284	3.4	2,395	1,972	33,352	4.8	34,510	14.6
Stanley	25	423	0.6	444	295	4,989	0.7	5,162	11.8
Sully	72	1,218	1.8	1,277	923	15,610	2.3	16,152	12.8
Tripp	115	1,946	2.9	2,041	1,613	27,280	3.9	28,227	14.0
Turner	72	1,218	1.8	1,277	646	10,926	1.6	11,305	9.0
Union	33	558	0.8	585	177	2,994	0.4	3,098	5.4
Walworth	60	1,015	1.5	1,064	757	12,803	1.9	13,248	12.6
Ziebach	3	51	0.1	53	11	186	0.0	192	3.6
Shannon	1	17	0.0	18	2	34	0.0	35	2.0
Todd	1	17	0.0	18	3	51	0.0	53	3.0
Unk/Unreported	192	3,249	-	-	1,420	24,016	-	-	7.4
TOTALS:	4,134	69,949	100%	69,941	42,310	715,578	100%	715,581	10.23

Revised: 30 April 2010

* Includes unknown county projection values by assuming unknown county values are distributed the same as reported county values. Total values may be different due to rounding.

** Calculation uses "# projected" values without correction for unknown/unreported county values.

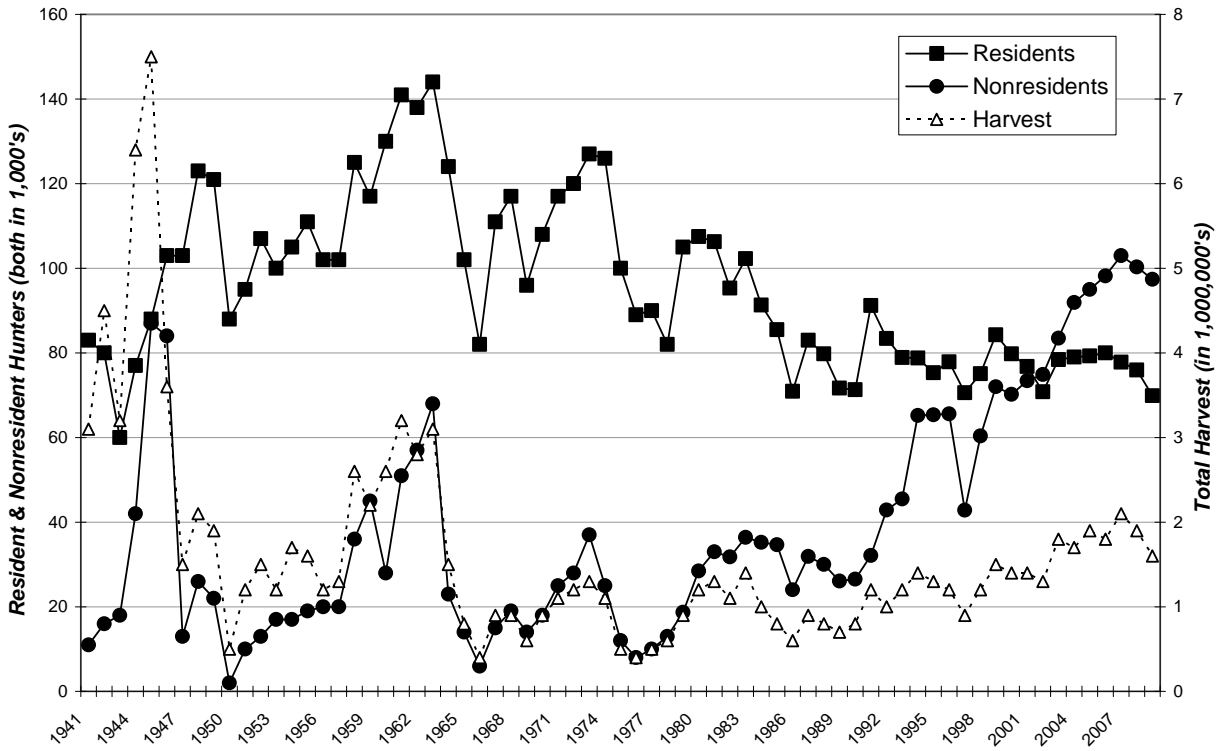
Nonresident Pheasant Harvest Distribution by County 2009

COUNTY	HUNTER DISTRIBUTION				HARVEST DISTRIBUTION				
	# Reported	# Projected	% of Total	# Proj w/ Unk *	# Reported	# Projected	% of Total	# Proj w/ Unk *	Birds/Hunter **
Minnehaha	34	605	0.6	625	222	3,952	0.4	4,062	6.5
Pennington	6	107	0.1	111	49	872	0.1	896	8.1
Brown	352	6,268	6.7	6,475	3,248	57,819	6.4	59,424	9.2
Beadle	306	5,449	5.8	5,629	2,828	50,342	5.5	51,739	9.2
Codington	118	2,101	2.2	2,170	801	14,259	1.6	14,655	6.8
Brookings	79	1,407	1.5	1,454	616	10,966	1.2	11,270	7.8
Yankton	27	481	0.5	497	242	4,308	0.5	4,428	9.0
Davison	282	5,022	5.3	5,188	2,299	40,925	4.5	42,061	8.1
Lawrence	0	0	0.0	0	0	0	0.0	0	0
Aurora	151	2,689	2.9	2,778	1,545	27,503	3.0	28,266	10.2
Bennett	17	303	0.3	313	113	2,012	0.2	2,068	6.6
Bon Homme	7	125	0.1	129	46	819	0.1	842	6.6
Brule	314	5,591	5.9	5,776	3,216	57,249	6.3	58,838	10.2
Buffalo	27	481	0.5	497	259	4,611	0.5	4,739	9.6
Butte	2	36	0.0	37	24	427	0.0	439	11.9
Campbell	98	1,745	1.9	1,803	1,060	18,869	2.1	19,393	10.8
Charles Mix	158	2,813	3.0	2,906	1,569	27,930	3.1	28,705	9.9
Clark	154	2,742	2.9	2,833	1,418	25,242	2.8	25,943	9.2
Clay	5	89	0.1	92	33	587	0.1	603	6.6
Corson	10	178	0.2	184	94	1,673	0.2	1,719	9.4
Custer	2	36	0.0	37	16	285	0.0	293	7.9
Day	110	1,959	2.1	2,024	760	13,529	1.5	13,905	6.9
Deuel	19	338	0.4	349	183	3,258	0.4	3,348	9.6
Dewey	38	677	0.7	699	446	7,939	0.9	8,159	11.7
Douglas	60	1,068	1.1	1,103	497	8,847	1.0	9,093	8.3
Edmunds	129	2,297	2.4	2,373	1,449	25,794	2.8	26,510	11.2
Fall River	3	53	0.1	55	66	1,175	0.1	1,208	22.2
Faulk	133	2,368	2.5	2,446	1,430	25,456	2.8	26,163	10.8
Grant	19	338	0.4	349	91	1,620	0.2	1,665	4.8
Gregory	156	2,778	2.9	2,870	1,653	29,426	3.2	30,243	10.6
Haakon	11	196	0.2	202	95	1,691	0.2	1,738	8.6
Hamlin	44	784	0.8	810	391	6,960	0.8	7,153	8.9
Hand	188	3,348	3.6	3,459	2,030	36,137	4.0	37,140	10.8
Hanson	34	605	0.6	625	268	4,771	0.5	4,903	7.9
Harding	4	71	0.1	73	28	498	0.1	512	7.0
Hughes	186	3,312	3.5	3,422	1,568	27,913	3.1	28,688	8.4
Hutchinson	53	944	1.0	975	377	6,711	0.7	6,897	7.1
Hyde	37	659	0.7	681	360	6,408	0.7	6,586	9.7
Jackson	5	89	0.1	92	48	854	0.1	878	9.6
Jerauld	86	1,531	1.6	1,582	934	16,626	1.8	17,088	10.9
Jones	32	570	0.6	589	365	6,497	0.7	6,677	11.4
Kingsbury	76	1,353	1.4	1,398	730	12,995	1.4	13,356	9.6
Lake	30	534	0.6	552	229	4,077	0.4	4,190	7.6
Lincoln	4	71	0.1	73	34	605	0.1	622	8.5
Lyman	285	5,075	5.4	5,243	3,103	55,238	6.1	56,771	10.9
McCook	26	463	0.5	478	148	2,635	0.3	2,708	5.7
McPherson	113	2,012	2.1	2,079	1,153	20,525	2.3	21,095	10.2
Marshall	34	605	0.6	625	277	4,931	0.5	5,068	8.2
Meade	1	18	0.0	19	0	0	0.0	0	0.0
Mellette	16	285	0.3	294	144	2,563	0.3	2,634	9.0
Miner	91	1,620	1.7	1,674	784	13,956	1.5	14,343	8.6
Moody	10	178	0.2	184	73	1,299	0.1	1,335	7.3
Perkins	34	605	0.6	625	320	5,696	0.6	5,854	9.4
Potter	128	2,279	2.4	2,354	1,572	27,984	3.1	28,761	12.3
Roberts	23	410	0.4	424	167	2,973	0.3	3,056	7.3
Sanborn	82	1,460	1.5	1,508	754	13,422	1.5	13,795	9.2
Spink	296	5,271	5.6	5,445	3,239	57,659	6.4	59,260	10.9
Stanley	50	890	0.9	919	452	8,046	0.9	8,269	9.0
Sully	62	1,104	1.2	1,141	654	11,642	1.3	11,965	10.5
Tripp	301	5,360	5.7	5,537	3,197	56,911	6.3	58,491	10.6
Turner	10	178	0.2	184	71	1,264	0.1	1,299	7.1
Union	4	71	0.1	73	19	338	0.0	347	4.8
Walworth	103	1,834	1.9	1,895	1,014	18,051	2.0	18,552	9.8
Ziebach	4	71	0.1	73	32	570	0.1	586	8.0
Shannon	4	71	0.1	73	21	374	0.0	384	5.3
Todd	9	160	0.2	165	51	908	0.1	933	5.7
Unk/Unreported	175	3,116	-	-	1,415	25,189	-	-	8.1
TOTALS	5,467	97,350	100%	97,347	52,390	932,613	100%	932,611	9.58

Revised: 30 April 2010

* Includes unknown county projection values by assuming unknown county values are distributed the same as reported county values. Total values may be different due to rounding.

SOUTH DAKOTA PHEASANT HARVEST 1941-2009



SOUTH DAKOTA PHEASANT HUNTERS AND AVERAGE SEASON HARVEST 1941-2009

