

# **PRAIRIE CHICKEN & SHARP-TAILED GROUSE**

Historically, these two species, plus ruffed grouse, have been combined under the name "Prairie Grouse." In these reports, harvest estimates for these species were combined. Prior to 2006, it had been estimated that sharptails probably make up 60% of the prairie grouse harvest, while ruffed grouse are almost inconsequential due to the numbers harvested. However, in 2006, hunters were asked specifically how many of each species were harvested of the total harvest and 76% were identified as sharp-tailed grouse, 20% as prairie chickens, and 4% were unknown. They continue to be combined for the overall harvest estimates in this report.

The 2009 grouse season covered 19 September 2009 - 3 January 2010 statewide (except Lacreek National Wildlife Refuge where the season didn't open until 17 October). Harvest surveys were sent to both resident and nonresident hunters. The daily limit was 3 birds, possession 15. To hunt grouse residents were required to hold a small game, 1-day small game, adult or junior combination, or youth small game license; nonresidents were required to obtain the nonresident small game, the nonresident youth small game, or nonresident shooting preserve license. No shooting preserve license holders were surveyed and none of their harvest is included in the data in this report.

In 2009, there were 92,465 resident and 101,922 nonresident licenses issued that allowed holders to hunt grouse. Approximately 8% of residents and nonresidents were surveyed for the upland bird seasons. Survey response rates were 71.4% for residents and 72.2% for nonresidents.

Based on survey responses indicating at least one day of hunting grouse, there were a projected 6,377 resident and 4,571 nonresident grouse hunters.

From the survey responses, a projected total of 38,680 grouse were harvested (26,018 by residents, 12,662 by nonresidents) during the 2009 season.

When asked their satisfaction on the season, (1 being very dissatisfied, and 7 being very satisfied), resident upland bird hunters reported an average rating of 4.93 while nonresidents reported a satisfaction rating of 5.59.

## A comparison of the 2000 - 2009 prairie grouse harvests

| Year | Resident Hunters |         |                |         |              | Nonresident Hunters |         |                |         |              |
|------|------------------|---------|----------------|---------|--------------|---------------------|---------|----------------|---------|--------------|
|      | Number Hunters   | Harvest | Ave Day Hunted | Ave Bag | Satisfaction | Number Hunters      | Harvest | Ave Day Hunted | Ave Bag | Satisfaction |
| 2000 | 12,369           | 100,807 | 5.75           | 8.15    | 4.71         | 4,841               | 20,139  | 4.20           | 4.16    | 5.20         |
| 2001 | 10,852           | 53,392  | 4.80           | 4.92    | 4.55         | 4,943               | 16,411  | 4.11           | 3.32    | 5.23         |
| 2002 | 8,644            | 29,649  | 4.37           | 3.43    | 4.17         | 4,963               | 11,762  | 4.32           | 2.37    | 5.76         |
| 2003 | 9,478            | 37,249  | 4.05           | 3.93    | 4.88         | 6,058               | 14,660  | 3.84           | 2.42    | 5.53         |
| 2004 | 7,859            | 27,821  | 4.12           | 3.54    | 4.81         | 3,655               | 11,367  | 4.04           | 3.11    | 5.39         |
| 2005 | 7,508            | 33,561  | 4.58           | 4.47    | 5.19         | 5,806               | 17,302  | 3.85           | 2.98    | 5.83         |
| 2006 | 7,836            | 27,269  | 4.02           | 3.48    | 4.99         | 6,135               | 13,620  | 3.92           | 2.22    | 5.71         |
| 2007 | 6,164            | 23,177  | 4.37           | 3.76    | 5.39         | 4,663               | 10,865  | 3.70           | 2.33    | 6.00         |
| 2008 | 7,044            | 34,023  | 4.46           | 4.83    | 5.31         | 5,383               | 13,458  | 4.26           | 2.50    | 5.86         |
| 2009 | 6,377            | 26,018  | 4.41           | 4.08    | 4.93         | 4,571               | 12,662  | 4.19           | 2.77    | 5.59         |

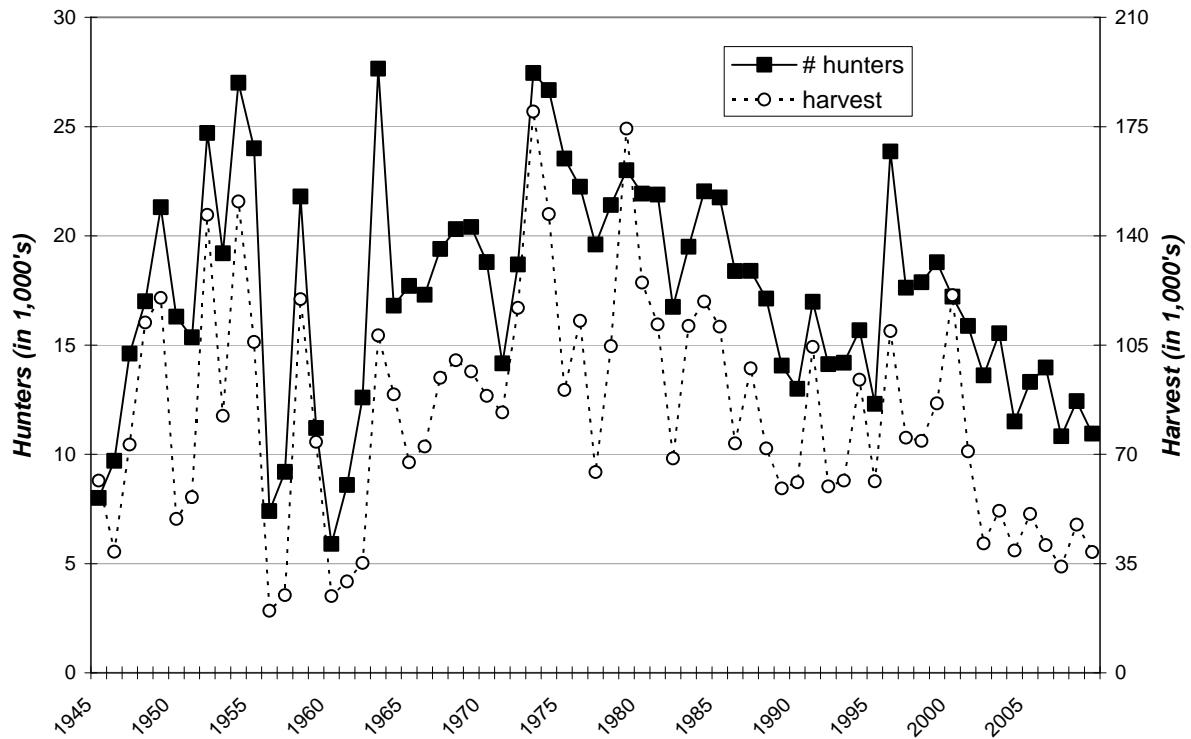
## PRAIRIE GROUSE HARVEST PROJECTIONS FOR 2009

Revised: 29 April 2010

|  | RESIDENT TOTALS BY LICENSE TYPE |               |              |              |               | NONRESIDENT TOTALS |              |                |
|--|---------------------------------|---------------|--------------|--------------|---------------|--------------------|--------------|----------------|
|  | Small                           |               | Junior       | Youth        | Sum           | Nonres             | Youth Sm     | Sum            |
|  | Game                            | Combo         | Combo        | SmGm         | Estimates     | Sm Game            | Game         | Estimates      |
| <b>Licenses Sold</b>                                 | 34,411                          | 43,675        | 7,856        | 6,523        | <b>92,465</b> | 98,615             | 3,307        | <b>101,922</b> |
| <b>Projected ACTIVE UPLAND BIRD HUNTERS</b>          | <b>28,136</b>                   | <b>31,732</b> | <b>4,989</b> | <b>5,507</b> | <b>70,433</b> | <b>81,839</b>      | <b>2,118</b> | <b>83,957</b>  |
| Number Sampled by Survey                             | 2,838                           | 3,630         | 630          | 552          | <b>7,650</b>  | 7,464              | 273          | <b>7,737</b>   |
| Number Responded to Survey                           | 1,996                           | 2,739         | 359          | 366          | <b>5,460</b>  | 5,420              | 169          | <b>5,589</b>   |
| Responded and Participated in Season                 | <b>1,632</b>                    | <b>1,990</b>  | <b>228</b>   | <b>309</b>   | <b>4,159</b>  | <b>4,607</b>       | <b>110</b>   | <b>4,717</b>   |
| Responded but DID NOT HUNT                           | 364                             | 749           | 131          | 57           | <b>1,301</b>  | 813                | 59           | <b>872</b>     |
| <b>Survey Response Rate</b>                          | <b>70.3%</b>                    | <b>75.5%</b>  | <b>57.0%</b> | <b>66.3%</b> | <b>71.4%</b>  | <b>72.6%</b>       | <b>61.9%</b> | <b>72.2%</b>   |
| No. Hunters Reporting Grouse Days                    | 112                             | 226           | 23           | 19           | <b>380</b>    | 253                | 4            | <b>257</b>     |
| Sum Grouse Hunted Days                               | 550                             | 992           | 75           | 57           | <b>1,674</b>  | 1,066              | 11           | <b>1,077</b>   |
| Average Days Hunted Grouse                           | <b>4.91</b>                     | <b>4.39</b>   | <b>3.26</b>  | <b>3.00</b>  | <b>4.41</b>   | <b>4.21</b>        | <b>2.75</b>  | <b>4.19</b>    |
| Sum Grouse Bagged                                    | 406                             | 1,023         | 86           | 35           | <b>1,550</b>  | 690                | 22           | <b>712</b>     |
| Average Season Grouse Bag                            | <b>3.63</b>                     | <b>4.53</b>   | <b>3.74</b>  | <b>1.84</b>  | <b>4.08</b>   | <b>2.73</b>        | <b>5.50</b>  | <b>2.77</b>    |
| <b>Projected Days Grouse Hunting</b>                 | <b>9,481</b>                    | <b>15,822</b> | <b>1,640</b> | <b>1,017</b> | <b>28,123</b> | <b>18,920</b>      | <b>212</b>   | <b>19,132</b>  |
| <b>Projected No. Grouse Hunters</b>                  | <b>1,931</b>                    | <b>3,604</b>  | <b>503</b>   | <b>339</b>   | <b>6,377</b>  | <b>4,494</b>       | <b>77</b>    | <b>4,571</b>   |
| <b>Projected Grouse Bag</b>                          | <b>7,010</b>                    | <b>16,326</b> | <b>1,881</b> | <b>624</b>   | <b>26,018</b> | <b>12,269</b>      | <b>424</b>   | <b>12,662</b>  |
|  | <b>TOTAL GROUSE HARVEST =</b>   |               |              |              |               | <b>38,680</b>      |              |                |
| <b>Upland Bird Hunters Mean Satisfaction Score *</b> | 4.85                            | 5.02          | 4.92         | 4.78         | 4.93          | 5.59               | 5.53         | 5.59           |

\* Based on scale of 1-7 with 1="very dissatisfied" and 7="very satisfied"

## PRAIRIE GROUSE HUNTERS & HARVEST 1945-2009



## Resident Grouse Harvest Distribution by County 2009

| COUNTY         | HUNTER DISTRIBUTION |              |               |                 | HARVEST DISTRIBUTION |               |             |                 | Birds/Hunter |
|----------------|---------------------|--------------|---------------|-----------------|----------------------|---------------|-------------|-----------------|--------------|
|                | # Reported          | # Projected  | % of Total    | # Proj w/ Unk * | # Reported           | # Projected   | % of Total  | # Proj w/ Unk * |              |
| Minnehaha      | 0                   | 0            | 0.0           | 0               | 0                    | 0             | 0.0         | 0               | 0            |
| Pennington     | 15                  | 252          | 4.3           | 271             | 109                  | 1,830         | 7.4         | 1,920           | 7.3          |
| Brown          | 0                   | 0            | 0.0           | 0               | 0                    | 0             | 0.0         | 0               | 0            |
| Beadle         | 0                   | 0            | 0.0           | 0               | 0                    | 0             | 0.0         | 0               | 0            |
| Codington      | 5                   | 84           | 1.4           | 90              | 5                    | 84            | 0.3         | 88              | 1.0          |
| Brookings      | 1                   | 17           | 0.3           | 18              | 1                    | 17            | 0.1         | 18              | 1.0          |
| Yankton        | 0                   | 0            | 0.0           | 0               | 0                    | 0             | 0.0         | 0               | 0            |
| Davison        | 0                   | 0            | 0.0           | 0               | 0                    | 0             | 0.0         | 0               | 0            |
| Lawrence       | 1                   | 17           | 0.3           | 18              | 2                    | 34            | 0.1         | 36              | 2.0          |
| Aurora         | 1                   | 17           | 0.3           | 18              | 1                    | 17            | 0.1         | 18              | 1.0          |
| Bennett        | 14                  | 235          | 4.0           | 253             | 57                   | 957           | 3.9         | 1,004           | 4.1          |
| Bon Homme      | 3                   | 50           | 0.8           | 54              | 17                   | 285           | 1.1         | 299             | 5.7          |
| Brule          | 0                   | 0            | 0.0           | 0               | 0                    | 0             | 0.0         | 0               | 0            |
| Buffalo        | 1                   | 17           | 0.3           | 18              | 0                    | 0             | 0.0         | 0               | 0.0          |
| Butte          | 10                  | 168          | 2.8           | 181             | 54                   | 906           | 3.7         | 951             | 5.4          |
| Campbell       | 2                   | 34           | 0.6           | 37              | 2                    | 34            | 0.1         | 36              | 1.0          |
| Charles Mix    | 7                   | 117          | 2.0           | 126             | 15                   | 252           | 1.0         | 264             | 2.2          |
| Clark          | 0                   | 0            | 0.0           | 0               | 0                    | 0             | 0.0         | 0               | 0            |
| Clay           | 0                   | 0            | 0.0           | 0               | 0                    | 0             | 0.0         | 0               | 0            |
| Corson         | 16                  | 269          | 4.5           | 290             | 66                   | 1,108         | 4.5         | 1,163           | 4.1          |
| Custer         | 6                   | 101          | 1.7           | 109             | 8                    | 134           | 0.5         | 141             | 1.3          |
| Day            | 5                   | 84           | 1.4           | 90              | 3                    | 50            | 0.2         | 52              | 0.6          |
| Deuel          | 1                   | 17           | 0.3           | 18              | 0                    | 0             | 0.0         | 0               | 0.0          |
| Dewey          | 14                  | 235          | 4.0           | 253             | 111                  | 1,863         | 7.5         | 1,955           | 7.9          |
| Douglas        | 0                   | 0            | 0.0           | 0               | 0                    | 0             | 0.0         | 0               | 0            |
| Edmunds        | 2                   | 34           | 0.6           | 37              | 1                    | 17            | 0.1         | 18              | 0.5          |
| Fall River     | 5                   | 84           | 1.4           | 90              | 8                    | 134           | 0.5         | 141             | 1.6          |
| Faulk          | 3                   | 50           | 0.8           | 54              | 4                    | 67            | 0.3         | 70              | 1.3          |
| Grant          | 8                   | 134          | 2.3           | 144             | 13                   | 218           | 0.9         | 229             | 1.6          |
| Gregory        | 7                   | 117          | 2.0           | 126             | 26                   | 436           | 1.8         | 458             | 3.7          |
| Haakon         | 17                  | 285          | 4.8           | 307             | 70                   | 1,175         | 4.7         | 1,233           | 4.1          |
| Hamlin         | 0                   | 0            | 0.0           | 0               | 0                    | 0             | 0.0         | 0               | 0            |
| Hand           | 5                   | 84           | 1.4           | 90              | 11                   | 185           | 0.7         | 194             | 2.2          |
| Hanson         | 0                   | 0            | 0.0           | 0               | 0                    | 0             | 0.0         | 0               | 0            |
| Harding        | 7                   | 117          | 2.0           | 126             | 34                   | 571           | 2.3         | 599             | 4.9          |
| Hughes         | 22                  | 369          | 6.2           | 397             | 60                   | 1,007         | 4.1         | 1,057           | 2.7          |
| Hutchinson     | 2                   | 34           | 0.6           | 37              | 4                    | 67            | 0.3         | 70              | 2.0          |
| Hyde           | 3                   | 50           | 0.8           | 54              | 5                    | 84            | 0.3         | 88              | 1.7          |
| Jackson        | 5                   | 84           | 1.4           | 90              | 47                   | 789           | 3.2         | 828             | 9.4          |
| Jerauld        | 0                   | 0            | 0.0           | 0               | 0                    | 0             | 0.0         | 0               | 0            |
| Jones          | 11                  | 185          | 3.1           | 199             | 45                   | 755           | 3.0         | 792             | 4.1          |
| Kingsbury      | 1                   | 17           | 0.3           | 18              | 0                    | 0             | 0.0         | 0               | 0.0          |
| Lake           | 0                   | 0            | 0.0           | 0               | 0                    | 0             | 0.0         | 0               | 0            |
| Lincoln        | 0                   | 0            | 0.0           | 0               | 0                    | 0             | 0.0         | 0               | 0            |
| Lyman          | 18                  | 302          | 5.1           | 325             | 67                   | 1,125         | 4.5         | 1,181           | 3.7          |
| McCook         | 1                   | 17           | 0.3           | 18              | 3                    | 50            | 0.2         | 52              | 2.9          |
| McPherson      | 3                   | 50           | 0.8           | 54              | 24                   | 403           | 1.6         | 423             | 8.1          |
| Marshall       | 4                   | 67           | 1.1           | 72              | 23                   | 386           | 1.6         | 405             | 5.8          |
| Meade          | 13                  | 218          | 3.7           | 235             | 104                  | 1,746         | 7.0         | 1,832           | 8.0          |
| Mellette       | 16                  | 269          | 4.5           | 290             | 83                   | 1,393         | 5.6         | 1,462           | 5.2          |
| Miner          | 0                   | 0            | 0.0           | 0               | 0                    | 0             | 0.0         | 0               | 0            |
| Moody          | 0                   | 0            | 0.0           | 0               | 0                    | 0             | 0.0         | 0               | 0            |
| Perkins        | 25                  | 420          | 7.1           | 452             | 112                  | 1,880         | 7.6         | 1,973           | 4.5          |
| Potter         | 1                   | 17           | 0.3           | 18              | 2                    | 34            | 0.1         | 36              | 2.0          |
| Roberts        | 1                   | 17           | 0.3           | 18              | 1                    | 17            | 0.1         | 18              | 1.0          |
| Sanborn        | 0                   | 0            | 0.0           | 0               | 0                    | 0             | 0.0         | 0               | 0            |
| Spink          | 1                   | 17           | 0.3           | 18              | 2                    | 34            | 0.1         | 36              | 2.0          |
| Stanley        | 37                  | 621          | 10.5          | 668             | 148                  | 2,484         | 10.0        | 2,607           | 4.0          |
| Sully          | 4                   | 67           | 1.1           | 72              | 13                   | 218           | 0.9         | 229             | 3.3          |
| Tripp          | 12                  | 201          | 3.4           | 216             | 45                   | 755           | 3.0         | 792             | 3.8          |
| Turner         | 1                   | 17           | 0.3           | 18              | 3                    | 50            | 0.2         | 52              | 2.9          |
| Union          | 1                   | 17           | 0.3           | 18              | 0                    | 0             | 0.0         | 0               | 0.0          |
| Walworth       | 6                   | 101          | 1.7           | 109             | 31                   | 520           | 2.1         | 546             | 5.1          |
| Ziebach        | 7                   | 117          | 2.0           | 126             | 36                   | 604           | 2.4         | 634             | 5.2          |
| Shannon        | 0                   | 0            | 0.0           | 0               | 0                    | 0             | 0.0         | 0               | 0            |
| Todd           | 2                   | 34           | 0.6           | 37              | 1                    | 17            | 0.1         | 18              | 0.5          |
| Unknown        | 27                  | 453          | -             | -               | 73                   | 1,225         | -           | -               | 2.7          |
| <b>TOTALS:</b> | <b>380</b>          | <b>6,377</b> | <b>100.1%</b> | <b>6,377</b>    | <b>1,550</b>         | <b>26,018</b> | <b>100%</b> | <b>26,018</b>   | <b>4.08</b>  |

Last Revised: 10 May 2010

\* Includes unknown county projection values by assuming unknown county values are distributed the same as reported county values. Total values may be different due to rounding.

\*\* Calculation uses "# projected" values without correction for unknown/unreported county values.

## Nonresident Grouse Harvest Distribution by County 2009

| COUNTY         | HUNTER DISTRIBUTION |              |             |                 | HARVEST DISTRIBUTION |               |             |                 | Birds/Hunter |
|----------------|---------------------|--------------|-------------|-----------------|----------------------|---------------|-------------|-----------------|--------------|
|                | # Reported          | # Projected  | % of Total  | # Proj w/ Unk * | # Reported           | # Projected   | % of Total  | # Proj w/ Unk * |              |
| Minnehaha      | 0                   | 0            | 0.0         | 0               | 0                    | 0             | 0.0         | 0               | 0            |
| Pennington     | 1                   | 18           | 0.4         | 20              | 0                    | 0             | 0.0         | 0               | 0.0          |
| Brown          | 3                   | 53           | 1.3         | 59              | 4                    | 71            | 0.6         | 79              | 1.3          |
| Beadle         | 3                   | 53           | 1.3         | 59              | 0                    | 0             | 0.0         | 0               | 0.0          |
| Codington      | 0                   | 0            | 0.0         | 0               | 0                    | 0             | 0.0         | 0               | 0            |
| Brookings      | 0                   | 0            | 0.0         | 0               | 0                    | 0             | 0.0         | 0               | 0            |
| Yankton        | 0                   | 0            | 0.0         | 0               | 0                    | 0             | 0.0         | 0               | 0            |
| Davison        | 0                   | 0            | 0.0         | 0               | 0                    | 0             | 0.0         | 0               | 0            |
| Lawrence       | 0                   | 0            | 0.0         | 0               | 0                    | 0             | 0.0         | 0               | 0            |
| Aurora         | 1                   | 18           | 0.4         | 20              | 3                    | 53            | 0.5         | 59              | 2.9          |
| Bennett        | 3                   | 53           | 1.3         | 59              | 1                    | 18            | 0.2         | 20              | 0.3          |
| Bon Homme      | 1                   | 18           | 0.4         | 20              | 3                    | 53            | 0.5         | 59              | 2.9          |
| Brule          | 6                   | 107          | 2.6         | 119             | 14                   | 249           | 2.2         | 277             | 2.3          |
| Buffalo        | 4                   | 71           | 1.7         | 79              | 14                   | 249           | 2.2         | 277             | 3.5          |
| Butte          | 1                   | 18           | 0.4         | 20              | 1                    | 18            | 0.2         | 20              | 1.0          |
| Campbell       | 3                   | 53           | 1.3         | 59              | 3                    | 53            | 0.5         | 59              | 1.0          |
| Chas Mix       | 0                   | 0            | 0.0         | 0               | 0                    | 0             | 0.0         | 0               | 0            |
| Clark          | 3                   | 53           | 1.3         | 59              | 2                    | 36            | 0.3         | 40              | 0.7          |
| Clay           | 0                   | 0            | 0.0         | 0               | 0                    | 0             | 0.0         | 0               | 0            |
| Corson         | 0                   | 0            | 0.0         | 0               | 0                    | 0             | 0.0         | 0               | 0            |
| Custer         | 0                   | 0            | 0.0         | 0               | 0                    | 0             | 0.0         | 0               | 0            |
| Day            | 0                   | 0            | 0.0         | 0               | 0                    | 0             | 0.0         | 0               | 0            |
| Deuel          | 0                   | 0            | 0.0         | 0               | 0                    | 0             | 0.0         | 0               | 0            |
| Dewey          | 21                  | 374          | 9.1         | 416             | 133                  | 2,365         | 20.8        | 2,631           | 6.3          |
| Douglas        | 0                   | 0            | 0.0         | 0               | 0                    | 0             | 0.0         | 0               | 0            |
| Edmunds        | 3                   | 53           | 1.3         | 59              | 17                   | 302           | 2.7         | 336             | 5.7          |
| Fall River     | 1                   | 18           | 0.4         | 20              | 4                    | 71            | 0.6         | 79              | 3.9          |
| Faulk          | 2                   | 36           | 0.9         | 40              | 1                    | 18            | 0.2         | 20              | 0.5          |
| Grant          | 0                   | 0            | 0.0         | 0               | 0                    | 0             | 0.0         | 0               | 0            |
| Gregory        | 8                   | 142          | 3.5         | 158             | 26                   | 462           | 4.1         | 514             | 3.3          |
| Haakon         | 7                   | 125          | 3.0         | 139             | 19                   | 338           | 3.0         | 376             | 2.7          |
| Hamlin         | 0                   | 0            | 0.0         | 0               | 0                    | 0             | 0.0         | 0               | 0            |
| Hand           | 3                   | 53           | 1.3         | 59              | 2                    | 36            | 0.3         | 40              | 0.7          |
| Hanson         | 1                   | 18           | 0.4         | 20              | 0                    | 0             | 0.0         | 0               | 0.0          |
| Harding        | 0                   | 0            | 0.0         | 0               | 0                    | 0             | 0.0         | 0               | 0            |
| Hughes         | 19                  | 338          | 8.2         | 376             | 38                   | 676           | 5.9         | 752             | 2.0          |
| Hutchinson     | 0                   | 0            | 0.0         | 0               | 0                    | 0             | 0.0         | 0               | 0            |
| Hyde           | 3                   | 53           | 1.3         | 59              | 2                    | 36            | 0.3         | 40              | 0.7          |
| Jackson        | 3                   | 53           | 1.3         | 59              | 24                   | 427           | 3.8         | 475             | 8.1          |
| Jerauld        | 3                   | 53           | 1.3         | 59              | 0                    | 0             | 0.0         | 0               | 0.0          |
| Jones          | 10                  | 178          | 4.3         | 198             | 31                   | 551           | 4.8         | 613             | 3.1          |
| Kingsbury      | 0                   | 0            | 0.0         | 0               | 0                    | 0             | 0.0         | 0               | 0            |
| Lake           | 0                   | 0            | 0.0         | 0               | 0                    | 0             | 0.0         | 0               | 0            |
| Lincoln        | 0                   | 0            | 0.0         | 0               | 0                    | 0             | 0.0         | 0               | 0            |
| Lyman          | 23                  | 409          | 10.0        | 455             | 49                   | 871           | 7.7         | 969             | 2.1          |
| McCook         | 0                   | 0            | 0.0         | 0               | 0                    | 0             | 0.0         | 0               | 0            |
| McPherson      | 6                   | 107          | 2.6         | 119             | 11                   | 196           | 1.7         | 218             | 1.8          |
| Marshall       | 2                   | 36           | 0.9         | 40              | 2                    | 36            | 0.3         | 40              | 1.0          |
| Meade          | 1                   | 18           | 0.4         | 20              | 1                    | 18            | 0.2         | 20              | 1.0          |
| Mellette       | 3                   | 53           | 1.3         | 59              | 13                   | 231           | 2.0         | 257             | 4.4          |
| Miner          | 0                   | 0            | 0.0         | 0               | 0                    | 0             | 0.0         | 0               | 0            |
| Moody          | 0                   | 0            | 0.0         | 0               | 0                    | 0             | 0.0         | 0               | 0            |
| Perkins        | 14                  | 249          | 6.1         | 277             | 35                   | 622           | 5.5         | 692             | 2.5          |
| Potter         | 8                   | 142          | 3.5         | 158             | 13                   | 231           | 2.0         | 257             | 1.6          |
| Roberts        | 1                   | 18           | 0.4         | 20              | 1                    | 18            | 0.2         | 20              | 1.0          |
| Sanborn        | 1                   | 18           | 0.4         | 20              | 1                    | 18            | 0.2         | 20              | 1.0          |
| Spink          | 1                   | 18           | 0.4         | 20              | 0                    | 0             | 0.0         | 0               | 0.0          |
| Stanley        | 20                  | 356          | 8.7         | 396             | 67                   | 1,192         | 10.5        | 1,326           | 3.3          |
| Sully          | 10                  | 178          | 4.3         | 198             | 36                   | 640           | 5.6         | 712             | 3.6          |
| Tripp          | 17                  | 302          | 7.3         | 336             | 36                   | 640           | 5.6         | 712             | 2.1          |
| Turner         | 0                   | 0            | 0.0         | 0               | 0                    | 0             | 0.0         | 0               | 0            |
| Union          | 0                   | 0            | 0.0         | 0               | 0                    | 0             | 0.0         | 0               | 0            |
| Walworth       | 9                   | 160          | 3.9         | 178             | 22                   | 391           | 3.4         | 435             | 2.4          |
| Ziebach        | 2                   | 36           | 0.9         | 40              | 11                   | 196           | 1.7         | 218             | 5.4          |
| Shannon        | 0                   | 0            | 0.0         | 0               | 0                    | 0             | 0.0         | 0               | 0            |
| Todd           | 0                   | 0            | 0.0         | 0               | 0                    | 0             | 0.0         | 0               | 0            |
| Unknown        | 26                  | 462          | -           | -               | 72                   | 1,280         | -           | -               | 2.8          |
| <b>TOTALS:</b> | <b>257</b>          | <b>4,571</b> | <b>100%</b> | <b>4,571</b>    | <b>712</b>           | <b>12,662</b> | <b>100%</b> | <b>12,662</b>   | <b>2.77</b>  |

Last Revised: 10 May 2010

\* Includes unknown county projection values by assuming unknown county values are distributed the same as reported county values. Total values may be different due to rounding.

\*\* Calculation uses "# projected" values without correction for unknown/unreported county values.